

מכון ויצמן למדע

WEIZMANN INSTITUTE OF SCIENCE



Determinants of functional synaptic connectivity among amygdala-projecting prefrontal cortical neurons

Document Version:

Early version, also known as pre-print

Citation for published version:

Printz, Y, Patil, P, Mahn, M, Benjamin, A, Litvin, A, Levy, R, Bringmann, M & Yizhar, O 2021, 'Determinants of functional synaptic connectivity among amygdala-projecting prefrontal cortical neurons', *BioRxiv*. <<https://www.biorxiv.org/content/10.1101/2021.11.07.467611v1>>

Total number of authors:

8

Published In:

BioRxiv

License:

Other

General rights

@ 2020 This manuscript version is made available under the above license via The Weizmann Institute of Science Open Access Collection is retained by the author(s) and / or other copyright owners and it is a condition of accessing these publications that users recognize and abide by the legal requirements associated with these rights.

How does open access to this work benefit you?

Let us know @ library@weizmann.ac.il

Take down policy

The Weizmann Institute of Science has made every reasonable effort to ensure that Weizmann Institute of Science content complies with copyright restrictions. If you believe that the public display of this file breaches copyright please contact library@weizmann.ac.il providing details, and we will remove access to the work immediately and investigate your claim.

Determinants of functional synaptic connectivity among amygdala-
projecting prefrontal cortical neurons

Yoav Printz, Pritish Patil, Mathias Mahn, Asaf Benjamin, Anna Litvin, Rivka Levy, Max
Bringmann, and Ofer Yizhar

Department of Brain Sciences, Weizmann Institute of Science, Rehovot 76100, Israel

Abstract

The medial prefrontal cortex (mPFC) mediates a variety of complex cognitive functions via its vast and diverse connections with cortical and subcortical structures. Understanding the patterns of synaptic connectivity that comprise the mPFC local network is crucial for deciphering how this circuit processes information and relays it to downstream structures. To elucidate the synaptic organization of the mPFC, we developed a high-throughput optogenetic method for mapping large-scale functional synaptic connectivity. We show that mPFC neurons that project to the basolateral amygdala display unique spatial patterns of local-circuit synaptic connectivity within the mPFC, which distinguish them from the general mPFC cell population. Moreover, the intrinsic properties of the postsynaptic mPFC cell and anatomical position of both cells jointly account for ~7.5% of the variation in probability of connection between mPFC neurons, with anatomical distance and laminar position explaining most of this fraction in variation. Our findings demonstrate a functional segregation of mPFC excitatory neuron subnetworks, and reveal the factors determining connectivity in the mPFC.

Introduction

The computational power of the neocortex is thought to be derived from the complexity and plasticity of connectivity patterns in cortical neuronal networks. Understanding these connections and their dynamics is therefore crucial to deciphering the principles of neuronal computation. Electrophysiological recordings from pairs or groups of neurons have revealed many of the factors which determine the probabilities and properties of cortical synaptic connections. The majority of this work has focused on primary sensory and motor cortical regions, aiming to delineate the streams of information that support sensory processing and motor control¹⁻³. These studies have established that the pattern of synaptic connectivity among pairs of cortical pyramidal neurons is not homogeneous⁴ but rather depends, among other factors, on the pre- and postsynaptic cell types^{5,6}, their intracortical laminar source of input^{5,7-9}, and the long-range projection target of each of the neurons¹⁰⁻¹⁷. Moreover, the anatomical axodendritic overlap alone cannot account for the probability of connection^{11,18-20}, indicating specific selection of synaptic partners. These findings suggest that cortical regions consist of interdigitated functional subnetworks of preferentially interconnected neurons². In the primary visual cortex, pyramidal neurons which respond to similar visual stimuli are more likely to be synaptically connected^{18,21}. Remarkably, connections between neurons sharing similar stimulus tuning are also the strongest²², emphasizing the preferential connectivity between cells that share a common role in the circuit.

Despite this body of knowledge, little is known about the synaptic organization of associative cortical structures such as the medial prefrontal cortex (mPFC)²³. In line with the complex morphology of its pyramidal cells²⁴, the mPFC connects with numerous cortical and subcortical regions^{25,26} and plays a role in multiple cognitive functions and complex behaviors^{23,27-38}. We set out to test whether similar principles of functional-subnetwork organization can be applied to the mPFC. We focused on the population of mPFC cells extending long-range axonal projections to the basolateral amygdala (mPFC-BLA cells) in order to test our hypothesis that their known involvement in associative fear learning^{33,39-43} is associated with a unique connectivity pattern that distinguishes them from other neuron populations in the mPFC, similar to principles found in the primary visual cortex^{11,18,21,22}. For this purpose, we developed an optogenetic approach for large-scale,

unbiased mapping of functional synaptic connections at the level of specific neuron populations. Our approach is based on co-expression of the channelrhodopsin stCoChR⁴⁴ with the calcium indicator GCaMP6s⁴⁵ in a targeted cell population. Under this configuration, we conducted whole-cell patch-clamp recordings from single neurons in the expressing region while semi-automatically detecting and stimulating other cells in their vicinity in three dimensions, in order to evaluate the input from each stimulated cell onto the recorded postsynaptic cell. We utilized the overlapping excitation spectra of stCoChR and GCaMP6s to perform simultaneous optogenetic stimulation and calcium recording using a single femtosecond laser source. This allows validation of spiking in stimulated cells, thereby providing information on the spatial selectivity of synaptic connections as well as accurate measures of connection probabilities. With this method, we mapped the functional connections among mPFC-BLA cells and among randomly labeled mPFC cells as reference. Our results reveal the detailed layer and projection target selectivity in the connectivity patterns of mPFC pyramidal cells. We further used the comprehensive connectivity maps to quantify the contribution of various anatomical and physiological features to the probability of connection between mPFC neurons.

Results

An optogenetic strategy for simultaneous two-photon stimulation and calcium recording of neurons in three dimensions using a single laser source.

To achieve reliable, single-cell-targeted optogenetic stimulation of pyramidal cells in the mPFC, we used the recently published soma-targeted channelrhodopsin variant stCoChR, which allows highly efficient two-photon stimulation⁴⁴. Since both stCoChR and GCaMP6s can be efficiently excited at $\lambda = 940$ nm, their co-expression allows simultaneous photostimulation and fluorescence-based activity readout using one wavelength. We co-expressed stCoChR and GCaMP6s in mPFC-BLA cells by injecting a Cre-expressing rAAV2-retro vector⁴⁶ into the BLA, and Cre-dependent AAV vectors expressing stCoChR and GCaMP6s into the mPFC (Figure 1A,B). To calibrate the local and retrograde coverage of the rAAV2-retro-Cre vector, we injected different titers and volumes of this vector into the BLA of the reporter mouse line Ai9⁴⁷ (Figure S1A,B).

In order to validate spiking in response to two-photon stimulation, we performed cell-attached recordings from mPFC-BLA cells expressing stCoChR and GCaMP6s in acute slices while scanning spiral patterns over the soma (Figure 1C). Two-photon spiral patterns were scanned at 10 Hz (spiral duration: 7.1 ms), and GCaMP6s fluorescence was recorded only during scan periods (Figure 1D). We found that spiral patterns scanned at 10 Hz evoked reliable spiking as well as an increase in GCaMP6s fluorescence over the spiral train (Figure 1D–F). Application of TTX (1 μ M) blocked spiking and abolished the increase in GCaMP6s fluorescence (Figure 1D–H), indicating that GCaMP6s fluorescence can be used as a proxy for spiking activity in these conditions. Furthermore, reducing the duration of each spiral from 7.1 ms to 3.6 ms such that some spirals fail to evoke a spike, we found that GCaMP6s fluorescence increased only following successful spiral stimulations (Figure S2A). Since the rise and decay kinetics of GCaMP6s fluorescence are slower than the duration of a spiral and the inter-spiral interval, respectively (Figure 1I and ref. 45), the relative GCaMP6s fluorescence during each spiral in a train reports spiking in response to previous spirals in the train. We therefore used the raw GCaMP6s fluorescence slope to determine whether spiking occurred during a spiral train (Figure 1G, bottom; Figure 1H, right; and Figure S2B; see Methods).

We next surveyed the space of two-photon scan parameters in order to optimize the GCaMP6s-based spike readout and the time precision of spiking. We performed cell-attached recordings from mPFC-BLA cells expressing stCoChR and GCaMP6s and measured spiking and relative GCaMP6s fluorescence while scanning trains of 10 spirals over each cell (Figure 1I and Figure S2C). We modified the diameter of the spirals, their duration (by concatenating multiple spirals), their frequency in the train, and the light power on the cell. GCaMP6s $\Delta F/F_0$ was higher for smaller spirals (10 and 15 μ m; Figure 1I), mainly due to increased contribution from off-cell noise in larger spirals (20 μ m; see Methods). Spike latency and jitter were lower for larger spirals (Figure S2C), leading us to proceed with 15 μ m spirals for our experiments. We chose a spiral duration of 7.2 ms (a two-spiral sequence), stimulation frequency of 10 Hz, and light power of 10 mW on cell, since these parameters provided high GCaMP6s $\Delta F/F_0$ and high spike probability while maintaining low spike latency, jitter and number of spikes per spiral (Figure 1I and Figure S2C). Under these conditions, the spatial specificity for evoking spikes, measured as the

full width at half maximum (FWHM), was $55.9 \pm 16.4 \mu\text{m}$ in the axial (z) axis and $24.2 \pm 7.2 \mu\text{m}$ in the radial (xy) plane (Figure S3A,B; see also Figure S3C–E and Supplementary Data and Discussion for the relationship between cell density and spatial specificity). The spatial specificity curve for GCaMP6s $\Delta F/F_0$ tended to be narrower than that of spiking (Figure S3A,B; FWHM for $\Delta F/F_0$: $23.9 \pm 4.1 \mu\text{m}$ in z and $11.3 \pm 1.8 \mu\text{m}$ in xy).

We next applied our method for combined stimulation and imaging to a population of cells in three dimensions (Figure 1J). For this, we used an algorithm for automated detection of fluorescently labeled cell bodies in image-stack volumes⁴⁸. Detection was based on mScarlet⁴⁹ and nuclear dTomato⁵⁰ co-expressed with stCoChR and GCaMP6s, respectively. Running the algorithm on $n = 5$ scanned volumes from two mice (volume size $\sim 420 \times 420 \times 300 \mu\text{m}^3$; $n = 209.2 \pm 8.9$ detected cells per volume) and observing the detections, we found that $2.5 \pm 0.4\%$ of detections were false and $5.4 \pm 0.5\%$ were double (i.e., coordinates point to the center of two adjacent cells; Figure S1C). We tested the algorithm on additional $n = 4$ scanned volumes from four mice, where we manually registered the coordinates of all the cells in the volume, independent of and blind to the automated detection ($n = 316.5 \pm 45.8$ manually registered cells per volume). The automated detection was biased to cells with higher fluorescence intensities compared with our manual cell registration (Figure S1D). In contrast, the distribution of cell positions along the depth of the slice was similar for automatically and manually detected cells (Figure S1E). Finally, we transformed the coordinates of the automatically detected cells into standardized brain-reference anatomical positions using anatomical landmarks (Figure 1J; see Methods).

Analysis of functional connectivity.

In order to measure functional synaptic connectivity among mPFC-BLA cells, we co-expressed stCoChR and GCaMP6s in mPFC-BLA cells (Figure 1A). In each experiment, we obtained a whole-cell recording from one mPFC-BLA cell in the acute slice. We then acquired a series of Z-sections covering the entire depth of the slice ($\lambda = 1040 \text{ nm}$), detected the labeled mPFC-BLA cells within the scanned volume (Figure 1J), and stimulated them sequentially as described above while recording both their GCaMP6s fluorescence and the synaptic currents in the recorded postsynaptic cell. Cells whose GCaMP6s fluorescence

indicated they did not spike in response to stimulation (see Methods) were excluded from analysis.

In order to determine which of the stimulated cells is connected to the recorded cell, we first used a template deconvolution-based method⁵¹ with a synaptic event waveform kernel⁵² to identify all excitatory postsynaptic currents (EPSCs) recorded during the period of sequential stimulation (see Methods). We clustered the detected EPSCs (both spontaneous and evoked) based on temporal proximity and fit EPSC clusters with a sum of functions describing the waveform of a synaptic current, such that compound events could be decomposed to determine the kinetics of each of the underlying events (Figure 2A).

We next developed a model to determine whether each stimulated cell is connected to the corresponding recorded cell. We used the rate and the stimulation-aligned time distribution of all EPSCs (Figure 2B and Table 5) to predict the EPSC distribution around the stimulation of each cell. We then fitted two models for each stimulated cell, one model that assumes no synaptic connection (whereby EPSCs distribute uniformly) and another model that assumes connection (whereby the EPSC distribution contains a bump following the stimulation; see Methods). To decide whether the stimulated cell is connected to the recorded cell, we used information criteria (see Methods) to determine which of the two models fits the EPSC distribution more accurately (Figure 2D). To validate and quantify the performance of our model, we examined the recording traces of all cells to identify synaptic connections manually. The area under the receiver operating characteristic curve was 0.996 (Figure 2E,F). To maximize accuracy, we relied both on the manual observation and on the model to identify synaptic connections, such that candidate connections which could not be resolved by manual observation ($n = 44$ stimulated cells) were settled by the model.

Overall, we generated 92 functional input maps by recording from 92 mPFC cells and stimulating a total of 10817 cells (Tables 1 and 2). Out of the stimulated cells in each input map, $78.6 \pm 1.6\%$ responded with spiking based on GCaMP6s data, giving a total of 8780 responsive cells. Of the maps, 75 were in the ventral mPFC (infralimbic and dorsal peduncular cortices) and 17 were in the dorsal mPFC (prelimbic and cingulate cortices).

An example of one functional input map of an mPFC-BLA cell in the ventral mPFC is shown in Figure 2G.

Functional synaptic connectivity in mPFC cell populations.

We used our technique to analyze the properties of functional synaptic connections among mPFC-BLA cells in the ventral mPFC (Figure 3A, left). As reference, we measured synaptic output from mPFC-BLA cells onto non-labeled cells, which likely do not extend projections to the BLA (given efficient retrograde labeling by rAAV2-retro⁴⁶ and assuming that <10% of mPFC neurons project to the BLA⁵³), by recording from non-labeled mPFC pyramidal cells while exciting mPFC-BLA cells in their environment (mPFC-BLA cells to non-mPFC-BLA cells; Figure 3A, middle). To measure the general, non-specific connectivity in the ventral mPFC, we sparsely expressed stCoChR and GCaMP6s in the mPFC (see Methods) and recorded from a randomly selected pyramidal cell while scanning over labeled cells in its environment (random mPFC cells to random mPFC cells; Figure 3A, right). Figure 3B shows the overlay of all maps obtained for each of the three types of synaptic connection, aligned to the position of the corresponding recorded cell.

We first asked whether the three types of connection differ in their probabilities and strengths. To avoid a bias between maps in the distances between presynaptic cells and the recorded cell, we restricted the measurement of overall probability for synaptic connection to a 300 μm distance from the recorded cell. Overall connection probability and connection strength (which was not restricted in distance) did not differ between the three map types (mPFC-BLA cells to mPFC-BLA cells, mPFC-BLA cells to non-mPFC-BLA cells, and random mPFC cells; Figure S5A–C, top and middle). To quantify the compound input that each recorded cell receives, we treated non-connected cells as having zero amplitude and calculated the average connection strength from all cells in the map (weighted input). Weighted input (restricted to 300 μm distance) did not differ between the three map types as well (Figure S5A–C, bottom). Moreover, we did not find correlation between the connection probability and mean connection strength across recorded cells (Figure 3C). We next divided the connectivity maps to layers, based on the laminar position of the recorded cell (Figure S4). We found that the weighted output from mPFC-BLA cells onto other mPFC-BLA cells was stronger in deeper layers than in superficial ones, whereas their output onto non-mPFC-BLA cells had an opposite laminar pattern (Figure 3D and Figure

S5D; layer 3 was not included in the analysis since random mPFC cells in L3 were not sampled due to the low density of labeled cells in this layer. See Figure S4). To further examine the directionality of excitatory input in each network, we measured the weighted input that each cell receives from a given anatomical direction. We found that mPFC-BLA cells tend to receive stronger input from other mPFC-BLA cells located medially to them (Figure 3E), yielding a superficial-to-deep flow of excitatory input. In contrast, we did not find such a pattern in output from mPFC-BLA cells onto non-mPFC-BLA cells or among random mPFC cells. Weighted input along the dorsoventral axis showed no particular directionality (Figure 3F). All connection types showed similar dependency of connectivity on distance (Figure S5B,C). Finally, synapses of all types and in all layers displayed similar short-term depression upon a presynaptic stimulation train (Figure S6; see Discussion).

Determinants of functional synaptic connectivity in the mPFC.

We next asked which parameters (of the ones recorded in our experiments) contribute to the variation in probability of connection between pairs of cells in the entire mPFC. For this purpose, in addition to the information about the anatomical locations of stimulated and recorded cells, we analyzed the intrinsic electrophysiological properties of each recorded cell, for the three classes of mPFC neuron (Figure 4A). We found that in the ventral mPFC, mPFC-BLA cells had higher output gain compared with non-mPFC-BLA cells (Figure 4B,D). mPFC-BLA cells showed stronger firing-rate adaptation compared with non-mPFC-BLA and with random mPFC cells (Figure 4C,E). Other electrophysiological properties did not differ between cell classes (Figure S7A and Table 3; see Figure S7B for pairwise correlations between electrophysiological properties and connectivity features). Counterintuitively, cells receiving strong weighted input tended to have lower input resistance (Figure 4F), perhaps as a homeostatic mechanism to restrain excitation. When examining the relationship between anatomical position and intrinsic properties, we found that sag ratio and spike threshold were both strongly correlated with cells' mediolateral (laminar) position, for all cell classes (Figure S7C). Spike half-width was also correlated with mediolateral position, but not in the mPFC-BLA cell class (Figure S7C).

To identify the factors that play a role in determining synaptic connectivity, we treated the data as pairs of stimulated (candidate presynaptic) and recorded (postsynaptic) cells, and

included cell pairs in both the ventral and the dorsal mPFC ($n = 7752$ cell pairs; see Methods). We used a logistic regression model to predict whether each pair is connected (Figure 4G). As features, we used the electrophysiological properties of the recorded cell, the anatomical positions of both cells, their distance, the connection type (as in Figure 3A), and the anteroposterior position of the recorded slice ($n = 20$ features overall). In order to remove multicollinearity between features (Figure S7B), we performed zero-phase components analysis (ZCA) whitening (see Methods). To find the features which non-redundantly affect connectivity, we imposed sparsity on the regression model by using Horseshoe priors^{54,55} (Figure 4H and Figure S8). We found that among all features, the distance between cells (Euclidean and lateral), the anatomical position of the presynaptic cell (mediolateral and dorsoventral), its bursting behavior, and the connection type had coefficients that center away from zero, suggesting that they contribute most to the variation in connectivity. The postsynaptic cell's input resistance and the anteroposterior position of the slice also contributed to connectivity. In order to quantify the contribution of all features to variation in connectivity, we used the unregularized regression model (Figure 4G) and calculated the cross-entropy between predicted and true connectivity as a measure for the information that the features in the model have on connection probability (Figure 4I; see Methods). We found that using the selected features mentioned above ($n = 8$ features) to predict connectivity reduced the cross-entropy by 7.5% compared with using shuffled connections (from 0.1161 to 0.1074). Using all features ($n = 20$) resulted in worse performance compared with using only the selected features, as demonstrated by higher cross-entropy and larger difference between the cross-validated and non-cross-validated models (Figure 4I). This finding supports the central role of these selected anatomical and physiological features in explaining variation in connectivity. When removing individual features from the model that uses selected features, we found that the largest effect on cross-entropy arises when removing Euclidean distance and the mediolateral position of the presynaptic cell (Figure 4I). These results suggest that anatomical position, especially along the mediolateral axis, and intersomatic distance dominate connectivity, while all features in our dataset can jointly account for ~7.5% of overall variation in connection probability.

Discussion

Current knowledge about functional synaptic connectivity in cortical networks is derived largely from experiments using paired-patch recordings, where two or more cells are simultaneously recorded in the whole-cell patch-clamp configuration, and spikes are triggered in one cell while the others are recorded for synaptic responses^{6,9,21,23,56}. These recordings are typically limited to a confined intersomatic distance and to cells located within ~ 60 μm of the surface of the slice. While this method provides high-precision information about the functional properties of the probed synapses, it suffers from very low yield, making it extremely difficult to detect sparse connections and to avoid bias in distances or positions of probed connections. In contrast, several recent studies have implemented recording from one cell while optogenetically stimulating a selection of cells in its vicinity. This approach allows unbiased mapping of synaptic connections in the network, thereby facilitating detection of sparse connections, but is restricted to measuring only unidirectional (in-degree) connectivity⁵⁷⁻⁵⁹. Here we presented a large-scale implementation of such an approach, combining it with calcium-based readout of activity using a single laser source. We utilized the overlapping excitation spectra of stCoChR and GCaMP6s to perform simultaneous stimulation and calcium recording. Using GCaMP6s recording to monitor the activity of each stimulated cell allowed us to accurately reconstruct the spatial architecture of synaptic connections by assigning an anatomical position to each connected and non-connected cell. Our semi-automated approach for cell detection and sequential stimulation and calcium recording allowed us to probe the input from 117.6 ± 5.0 cells (of which 95.4 ± 5.1 are confirmed to respond to stimulation via the GCaMP6s signal) onto each recorded cell in three dimensions. The use of a single light path makes this approach accessible and widely applicable using almost any commercially available two-photon microscope system.

Among all the available anatomical and cellular features in our data, several seem to dominate the probability of synaptic connection between pyramidal cells in the mPFC (Figure 4G–I and Figure S8). The most prominent features are intersomatic distance and the laminar depth of the presynaptic cell. Connection probability tends to decrease with intersomatic distance, and cell pairs whose presynaptic cell is in deeper layers also tend to have a lower probability of connection (Figure 4H,I). Notably, laminar depth of the

recorded (postsynaptic) cell is not correlated with the cell's input properties (connection probability and amplitude, $p \geq 0.12$). Other features contributing to reduction in connection probability include the spike-bursting behavior of the postsynaptic cell (and, to a lesser extent, its input resistance), its dorsoventral anatomical position (whereby ventral position is associated with reduction in connection probability), and the anteroposterior position of both cells (whereby anterior position is weakly associated with reduction in connection probability). A connection type of mPFC-BLA cell to mPFC-BLA cell is positively associated with connection probability (Figure 4H and Figure S8). Notably, the negative correlation of input resistance with connectivity (Figure 4F) indicates that it is not an artefact of the detectability of synaptic connections (as higher resistance would facilitate detection of weaker EPSCs). Our regression analysis and cross-entropy calculations (Figure 4I) suggest that all features taken together can account for $\sim 7.5\%$ of variation in connectivity. This finding suggests that the probability of pyramidal cells in the mPFC to form a synaptic connection is determined mostly by features that were not available in our experimental paradigm. These could be the morphological features of the pre- and postsynaptic cells, the electrophysiological properties of the presynaptic cell (which are not accessible using optogenetic connectivity mapping)^{6,12,14,23}, the activity patterns of the cells^{18,21}, their gene-expression profile^{60,61}, cell lineage^{61–64} (and lineage of projection-target cells⁶⁵), age and experience of the animal^{66–68}, or sheer randomness.

A previous transsynaptic tracing study has revealed that only $\sim 20\%$ of the synaptic inputs onto mPFC L5 cells are from local mPFC cells, whereas in L5 cells of the barrel cortex, input from local cells amounts to $\sim 80\%$ of the total synaptic input⁶⁹. This property could translate to sparser local connectivity in the mPFC compared with other cortical regions. Accordingly, the overall synaptic connection rates in our dataset (Figure S5A–C, top) were low compared with connection rates found in sensory cortex^{6,9}. This sparse connectivity is consistent with recent findings regarding connections among pyramidal neurons in the mPFC found using paired intracellular recording⁷⁰. However, an earlier study found similar connectivity rates in the mPFC and the visual cortex of the ferret²³. These differences could be attributed to experimental factors of our system, such as the temporal jitter in presynaptic spiking and in EPSC latencies, and the limitation in the number of stimulations

per presynaptic cell, set by the limited recording duration and the large overall number of putative connections to be probed.

Synapses among pyramidal neurons in the ferret mPFC have been shown to be diverse in their kinetic properties, with some showing strong short-term facilitation²³ compared with the largely depressing synapses among sensory pyramidal neurons in the mouse⁷¹ (although this may differ *in vivo*^{72,73}). Although our connectivity-mapping protocol does not allow precise control over the number of presynaptic spikes per stimulation (Figure S2C), we used it to estimate the short-term plasticity in probed synapses. We found no differences in short-term plasticity between cell types and layers (Figure S6), suggesting either that this specific type of facilitating synaptic connection does not exist in the mouse mPFC, or that it was not represented in our dataset.

Pyramidal cells in the mPFC are highly heterogeneous in their long-range input and output profiles^{25,26}. Given their common projections to the BLA and their shared involvement in associative fear learning^{33,39–43}, we hypothesized that mPFC-BLA cells would show unique connectivity patterns within the mPFC local circuit. Our data indicated that, at the population level, mPFC-BLA cells seem to be similar in their connectivity pattern to the general mPFC pyramidal cell population (Figure S5A–C). However, close examination of the spatial distribution of connections revealed that mPFC-BLA cells are selective in their synaptic output along the laminar axis (Figure 3D,E). The mPFC and the BLA have been shown to share preferentially strong reciprocal synaptic connections^{53,74,75}. Axonal projections from the BLA onto the mPFC, which carry information about learned associations⁷⁶, densely innervate L2 (and also L5)^{74,77}, where they directly excite L2/3 pyramidal cells⁵³ and interneurons⁷⁴. Our findings suggest a stream of information, whereby input from the BLA strongly excites back-projecting mPFC-BLA cells in superficial layers⁵³, from which information diverges to two main routes. One route is directed laterally onto other mPFC-BLA cells in deeper layers (Figure 3D,E) to form a recurrent excitatory loop with the BLA. The other route spreads locally within the superficial layers onto other mPFC pyramidal cell populations (Figure 3D). One possible target population for this route is nucleus accumbens (NAc)-projecting neurons, which are abundant in superficial mPFC layers^{25,74} (as well as pyramidal neurons dually projecting to both the BLA and the NAc⁷⁴). Therefore, this local processing of information from the

BLA in the mPFC could form a basis for the processing of sensory inputs associated with negative and positive valence, to guide action selection in the face of conflicting cues^{38,76}.

Acknowledgements

We thank all members of the Yizhar lab for ideas, criticism and discussions throughout this project. We thank Mickey London for insightful comments on the manuscript. This work was supported by funding from the European Research Commission (ERC CoG PrefrontalMap 819496), the Human Frontier Science Program (RGY0064/2017), the Adelis Foundation and the Candice Appleton Family Trust. OY is supported by the Joseph and Wolf Lebovic Charitable Foundation Chair for Research in Neuroscience.

Methods

AAV expression plasmids. A Cre-dependent stCoChR expression plasmid, labeled with mScarlet (pAAV-EF1 α -DIO-CoChR-Kv2.1-P2A-mScarlet), was generated as described in ref. 44. Cre-dependent GCaMP6s plasmid labeled with nuclear dTomato (pAAV-EF1 α -DIO-GCaMP6s-P2A-NLS-dTomato) was acquired from Addgene (plasmid #51082). Cre expression plasmids, used for local sparse expression of stCoChR and GCaMP6s in the mPFC, were either acquired from Addgene (pAAV-EF1 α -NLS-Cre-P2A, plasmid #55636) or cloned based on pAAV-EF1 α -NLS-Cre-P2A using standard restriction cloning (pAAV-CaMKII α -NLS-Cre-P2A).

Production of recombinant AAV vectors. HEK293 cells were seeded at 25–35% confluence. The cells were transfected 24 h later with plasmids encoding AAV rep, cap of AAV1 and AAV2, and a vector plasmid for the rAAV cassette expressing the relevant DNA using the PEI method⁷⁸. Cells and medium were harvested 72 h after transfection, pelleted by centrifugation (300 \times g), resuspended in lysis solution ([mM]: 150 NaCl, 50 Tris-HCl; pH 8.5 with NaOH) and lysed by three freeze–thaw cycles. The crude lysate was treated with 250 U benzonase (Sigma) per 1 ml of lysate at 37 °C for 1.5 h to degrade genomic and unpackaged AAV DNA before centrifugation at 3000 \times g for 15 min to pellet

cell debris. The virus particles in the supernatant (crude virus) were purified using heparin-agarose columns, eluted with soluble heparin, washed with phosphate-buffered saline (PBS) and concentrated by Amicon columns. Viral suspension was aliquoted and stored at -80°C . Viral titers were measured using real-time PCR. Retrograde AAV vectors (rAAV2-retro) were kindly provided by the Janelia Viral Tools facility (rAAV2-retro-hSyn-Cre) or generated as described in ref. 46 (rAAV2-retro-EF1 α -Cre).

Animals. All experimental procedures were approved by the Institutional Animal Care and Use Committee (IACUC) at the Weizmann Institute of Science. C57BL/6J male mice aged four weeks postnatal were obtained from Envigo and used for AAV vector injections and for recordings. Ai9 mice⁴⁷ (Cre-dependent tdTomato reporter line, used for calibrating retrograde expression from the BLA) were obtained from Jackson Laboratory and bred in-house. Up to five mice were housed in a cage in a 12 h light–dark cycle with food and water *ad libitum*. Following viral injection surgery, mice were housed for at least four weeks before being recorded to allow for recovery and virus expression.

Stereotactic injection of AAV vectors. Four- to six-week-old mice (29–46 days postnatal) were initially induced with ketamine (80 mg/kg) and xylazine (10 mg/kg) by intraperitoneal injection and then placed into a stereotaxic frame (David Kopf Instruments) and put under isoflurane anesthesia ($\sim 0.9\%$ in O_2 , v/v). A craniotomy (~ 1 mm diameter) was made above each injection site. A Nanofil syringe (World Precision Instruments) with a 34 G beveled needle was filled with virus suspension (or mixture of viruses, according to injection site). The needle was inserted into the injection site, bevel facing anteriorly, and left in place for 5 min, followed by slow injection of the virus mixture (10–100 nl/min). After injection, the needle was left in place for additional 10 min and then slowly withdrawn. The surgical incision was closed with tissue adhesive (3M), and buprenorphine (0.05 mg/kg) was subcutaneously injected for post-surgical analgesia. Mice were monitored daily for the first week after surgery and twice weekly afterward. Injections coordinates, in mm relative to bregma (injected volume): mPFC: 1.95 anterior, 0.3 lateral, 2.85 ventral (400–500 nl); BLA: 1.15 posterior, 3.0 lateral, 5.0 ventral (100–350 nl). AAV vectors used for intracranial injections had genomic titers ranging 5.3×10^{11} – 3.1×10^{13} genome copies per milliliter (gc/ml, before dilution; see below). When AAV vectors were

injected together for co-expression, their titers were matched by up to one order of magnitude. To achieve local sparse expression of stCoChR and GCaMP6s, Cre-dependent vectors were injected together with a titer-matched Cre-expressing vector that was first diluted in PBS by a factor of 1:100 before being mixed with the Cre-dependent vectors and injected. This dilution factor was based on calibration injections performed using dilutions of 1:20 to 1:1000 in order to achieve cell density comparable to that of mPFC-BLA cells.

Calibration of retrograde expression in mPFC-BLA cells. Ai9 mice were injected with varying volumes of rAAV2-retro-Cre into the BLA (100 nl at injection rate of 10 nl/min, 200 nl at 20 nl/min, or 300 at 30 nl/min). The left BLA of each mouse was injected with rAAV2-retro-EF1 α -Cre at a titer of 4.1×10^{12} gc/ml, and the right BLA was injected with the same volume of rAAV2-retro-hSyn-Cre at a titer of 2.5×10^{13} gc/ml. At least four weeks after injection, mice were deeply anesthetized with an intraperitoneal injection of pentobarbital (400 mg/kg) and perfused transcardially with ice-cold PBS followed by a solution of 4% paraformaldehyde (PFA) in PBS (pH 7.4). Brains were removed and incubated overnight in 4% PFA at 4 °C, and then transferred to 30% sucrose in PBS for at least 24 h at 4 °C until cryosectioning. Coronal sections (40 μ m thickness) were cut on a microtome (Leica Microsystems) and collected in cryoprotectant solution (25% glycerol and 30% ethylene glycol in PBS, pH 6.7). Sections were washed in PBS, stained for 3 min with DAPI (5 mg/ml solution diluted 1:30,000 prior to staining), washed again with PBS, mounted on gelatin-coated slides, dehydrated, and embedded in DABCO mounting medium (Sigma). Images of sections from each mouse, located approximately at the same anteroposterior position, were acquired using a slide-scanning microscope (VS120, Olympus), with acquisition settings being kept constant across all sections. Regions of interest (ROIs) for quantification of cell number and fluorescence intensity were selected based on DAPI fluorescence and on atlas reference images to cover the BLA and the ventral mPFC. Cell bodies in the ventral mPFC ROIs were counted manually from z-stack images that were reacquired under a confocal microscope (Zeiss LSM 700). Cell bodies in the BLA could not be clearly discerned due to local expression of the rAAV2-retro-Cre vector and therefore were not counted. Fluorescence intensity was calculated as the mean for the entire ROI from the z-stack images acquired using the slide scanning microscope.

Acute brain slice preparation. Mice were injected intraperitoneally with pentobarbital (130 mg/kg) and perfused transcardially with carbogenated (95% O₂, 5% CO₂) ice-cold slicing solution ([mM] 2.5 KCl, 11 glucose, 234 sucrose, 26 NaHCO₃, 1.25 NaH₂PO₄, 10 MgSO₄, 0.5 CaCl₂; 340 mOsm/kg). After decapitation, 300 µm-thick coronal mPFC slices were prepared in carbogenated ice-cold slicing solution using a vibratome (Leica VT 1200 S) and allowed to recover for 20 min at 33 °C in carbogenated high-osmolarity artificial cerebrospinal fluid (high-osmolarity aCSF; [mM] 3.21 KCl, 11.8 glucose, 131.6 NaCl, 27.8 NaHCO₃, 1.34 NaH₂PO₄, 1.07 MgCl₂, 2.14 CaCl₂; 320 mOsm/kg) followed by 25 min incubation at 33 °C in carbogenated iso-osmotic aCSF ([mM] 3 KCl, 11 glucose, 123 NaCl, 26 NaHCO₃, 1.25 NaH₂PO₄, 1 MgCl₂, 2 CaCl₂; 300 mOsm/kg). Subsequently, slices were kept at room temperature in carbogenated aCSF until use.

Electrophysiological recording in acute brain slices. Whole-cell patch-clamp recordings were obtained under visual control using oblique illumination on a two-photon laser-scanning microscope (Ultima IV, Bruker) equipped with a femtosecond pulsed laser (Chameleon Vision II, 80 MHz repetition rate; Coherent), a 12 bit monochrome CCD camera (QImaging QIClick-R-F-M-12) and a 20×, 1.0 NA objective (Olympus XLUMPlanFL N). Borosilicate glass pipettes (Sutter Instrument BF100-58-10) with resistances ranging 3–6 MΩ were pulled using a laser micropipette puller (Sutter Instrument Model P-2000). The recording chamber was perfused with carbogenated aCSF at 2 ml/min and maintained at ~26–32 °C. Pipettes were filled with K-based low-Cl solution ([mM] 130 K-gluconate, 5 KCl, 10 HEPES, 10 Na₂-phosphocreatine, 4 ATP-Mg, 0.3 GTP-Na; 285 mOsm/kg; pH adjusted to 7.25 with KOH) for most of the connectivity-mapping experiments, and with Cs-based intracellular solution for the rest ([mM] 120 Cs-gluconate, 11 CsCl, 1 MgCl₂, 1 CaCl₂, 10 HEPES, 11 EGTA, 5 QX-314; 280 mOsm/kg; pH adjusted to 7.3 with CsOH). In cell-attached recordings, used for correlating GCaMP6s fluorescence with electrophysiological recording of the same cell, pipettes were filled with 150 mM NaCl. Alexa Fluor 350 dye (<1 mM; Thermo Fisher Scientific) was added to the intracellular solutions, as well as Neurobiotin Tracer (0.3 mg/ml; Vector Laboratories) in some of the experiments. Recordings were performed using a MultiClamp 700B amplifier, filtered online at 8–10 kHz, digitized at 20–50 kHz using a Digidata 1440A digitizer and acquired using pClamp 10 software (Molecular Devices).

Full-field illumination and light power calibration. Full-field illumination was performed using a 470 nm light-emitting diode (29 nm bandwidth LED; M470L2-C2; Thorlabs) delivered through the microscope illumination path including a custom dichroic in order to reflect the 470 nm activation wavelength. Light power densities were calculated by measuring the light transmitted through the objective using a power meter (Thorlabs PM100A with S142C sensor) and dividing by the illumination area, which was directly measured by placing an autofluorescent micrometer in the image plane and illuminating with the LED to measure the fluorescent area observed through the microscope eyepiece.

Sequential two-photon spiral scanning of candidate presynaptic cells. A region in an acute mPFC slice containing cells expressing stCoChR and GCaMP6s was selected using brief wide-field green illuminations so as to minimize activation of stCoChR in the slice. A cell (either expressing stCoChR and GCaMP6s or non-expressing) was patch-clamped and sections spanning the entire depth of the slice were scanned (5 μm interval, 1040 nm, ~9–55 mW under objective) using Prairie View software (Bruker) to obtain a volume of ~420 \times 420 \times 300 μm^3 containing the recorded cell. Cell bodies were detected in the volume using a custom script written in Matlab (MathWorks)⁴⁸. Coordinates for two-photon spiral scanning of each of the cells (15 μm diameter, 1 μm revolution distance, scanning inward and outward for 7.16 ms) were generated using a custom-written Matlab script. An additional Matlab script was generated for sequential scanning of all the cells while adjusting focus and light power between cells. Detected cells were sequentially scanned at 940 nm using Prairie View while the patched cell was continuously recorded in voltage-clamp mode at –70 mV. The GCaMP6s fluorescence signal was recorded through a GaAsP PMT (Bruker) during scan periods. Each cell was scanned with 10 or 15 spirals delivered at 10 Hz. Light power on each cell was 10 mW (after adjustment for attenuation through the tissue; see below). If the recorded cell remained viable after all putative presynaptic cells were stimulated, up to three repetitions were executed with the same set of scan patterns. At the beginning and at the end of each protocol repetition, a series of 5 mV square hyperpolarizing voltage pulses were delivered in order to monitor the recorded cell's input resistance, membrane capacitance, and access resistance. At the beginning of each recording (prior to the presynaptic cell scanning protocol), full-field light pulses were

delivered to verify stCoChR expression, or to look for active synaptic contacts across the entire field of illumination in case the recorded cell was non-expressing.

Detection and modeling of synaptic events. The process of detecting and modeling EPSCs in a voltage-clamp recording trace was composed of six steps.

(1) Detrending. To standardize event detection, we inverted the recording trace (multiplied by -1) and then downsampled it to 5000 Hz using polyphase resampling. To compensate for drifts in the holding current and other slow fluctuations in the signal, we estimated a baseline for the recording trace by applying a 10th percentile filter of 50 ms width, followed by smoothing, which was done by downsampling to 200 Hz, median filtering with a 15 ms window, and upsampling back to 5000 Hz. The baseline was then subtracted from the recording trace to yield a “zero-baseline” trace S (shifted to have a zero median) which was used for all subsequent analyses. The noise in the trace was characterized by an estimated standard deviation \widehat{SD} of $1.4826 \times \text{MAD}$, where MAD is the median absolute deviation around the median.

(2) Deconvolution. To detect the EPSCs in the zero-baseline trace, we deconvolved it with a kernel similar to the waveform of a typical EPSC^{52,79}:

$$k(t) = \exp(-t/\tau_{decay}) \times (1 - \exp(-t/\tau_{rise}))$$

We used the OASIS implementation of this deconvolution⁵¹ originally intended for fast and accurate detection of spikes from calcium signals. We used a kernel with time constants $\tau_{decay} = 3.5$ ms and $\tau_{rise} = 0.7$ ms and ran the OASIS algorithm for up to 10 iterations with a sparsity-imposing L1 penalty and noise level of $0.8 \widehat{SD}$. For subsequent analyses we used two outputs from the OASIS algorithm: the deconvolved trace and the denoised trace (convolution of the deconvolved trace with the kernel).

(3) Detection. Detection of EPSCs was performed by finding peaks in the deconvolved trace after filtering it with a triangular kernel of 2.5 ms width. We only used peaks with height and prominence of at least $0.5 \widehat{SD}$ and a minimum distance of 2.0 ms between them. The location of the peak was used as an estimate of onset time (\hat{o}), and the area under the curve of the deconvolved trace between -0.4 ms and $+0.8$ ms from \hat{o} was used to estimate the height (\hat{h}) of the event.

(4) Clustering. Detected EPSCs were clustered such that two consecutive events were in the same cluster if the second event started before the first had decayed back to baseline. To achieve this, we took all segments of the denoised trace where it was higher than $1.8 \widehat{SD}$. We extended each segment by 10 ms before its beginning and 20 ms after its end, and further extended it by 10 ms around events. We merged overlapping segments, such that all events within the same segment were included in the same cluster.

(5) Fitting. To accurately determine the time and the shape of synaptic events, we used two steps of curve fitting to refine our parameter estimates iteratively. For this, the zero-baseline trace for each cluster of events was fit to the sum of synaptic kernels with separate parameters:

$$\tilde{s} = c + \sum_{i=1}^n k(t; h, o, \tau_{decay}, \tau_{rise})$$

where $k(t; h, o, \tau_{decay}, \tau_{rise})$ is a synaptic kernel of height h at onset time o with shape $k(t) = \exp(-t/\tau_{decay}) \times (1 - \exp(-t/\tau_{rise}))$, c is the constant offset for each cluster, and n is the number of events in the cluster (for simplicity, we assumed that in the soma, where the recordings are made, synaptic events are summed linearly).

We minimized

$$\frac{RMS(S - \tilde{s})}{\widehat{SD}} + \frac{RMS(o - \hat{o})}{5}$$

where RMS is the root mean square error, S is the zero-baseline trace, and onset times of all the events are in milliseconds. The height and the two time constants (rise and decay) were optimized in the logarithmic scale to ensure the same relative accuracy across event heights and timescales. The search space of the parameters height $[\hat{h}/15, 3\hat{h}]$ and onset time $[\hat{o} - 10, \hat{o} + 10]$ was set relative to the estimate for each event, whereas the search space for the time constants ($0.5 < \tau_{decay} < 50$, $0.1 < \tau_{rise} < 10$, in ms, with a constraint $\tau_{decay} > \tau_{rise}$) was identical across all the events. The first round of minimization was done using Dual Annealing⁸⁰, a global minimization method based on simulated annealing in SciPy⁸¹. The number of iterations and function evaluations were increased with the number of events in the cluster. The second round of minimization was done using the

SciPy implementation of Powell’s method, a derivative-free local optimization method, with the starting point from the optimum found by dual annealing.

(6) Thresholding. After the fitting, only events with heights of more than $2.5\widehat{SD}$ were kept. See Table 4 for all parameter used in the procedure.

Modeling the distribution of EPSCs and assessing functional connectivity. The recorded (postsynaptic) cell receives spontaneous EPSCs from cells in the network that are independent of the stimulation of the targeted (candidate presynaptic) cells. Moreover, evoked EPSCs can have large jitter resulting from the jitter in stimulation-evoked presynaptic spikes (Figure S2C) and in synaptic latency. These two factors served as motivation for developing a statistical model to determine which stimulated cell is connected to the recorded cell.

(1) Bayesian “rate-and-time” models. To this end, we combined two types of information using Bayesian models whose posteriors were sampled using a Markov chain Monte Carlo (MCMC) method. First, if a stimulated cell is connected to the recorded cell, a bump in the rate of EPSCs is expected between ~ 5 – 25 ms from stimulation onset (see Figure 2B–D). Second, if a cell is connected, evoked events appear in addition to spontaneous events, such that a higher rate of events is expected during the evoked time period (90 ms after the stimulation, disregarding the last 10 ms before the next stimulation) compared with reference 90 ms intervals where no stimulation occurred (spontaneous intervals). Model 1 assumes that the stimulated cell is not connected to the recorded cell, and thus expects the distribution of events in the evoked time periods to be uniform and the same rate to explain the number of events in both spontaneous and evoked periods. Model 2 assumes that the cell is connected, and thus expects the distribution of events in the evoked time periods to have a bump following the stimulation time on top of a uniform distribution. These two models (1 and 2) are referred to as “rate-and-time” models. We sampled from the posteriors of these two models using the No-U-Turn Sampler (NUTS)⁸² in PyMC3⁸³. Then, using the Pareto-smoothed importance sampling leave-one-out (PSIS-LOO)⁸⁴ information criterion, we chose the hypothesis (connected or not connected) with a better fit for each cell. The priors for these models were based on either empirical data or biologically plausible values (Table 5).

(2) Data. The rate-and-time models fit the following data for each stimulated cell for each protocol repetition:

- Spont_time = duration of the given spontaneous segment (≤ 90 ms); these segments were within 5 seconds of the time of stimulation of the stimulated cell.
- Evoked_time = duration of the given evoked segment ($= 90$ ms).
- Num_events_spont = total number of events in each spontaneous segment.
- Num_events_evoked = total number of events in each evoked segment.
- Event_times = exact times of all the events which occur in the evoked time segment (relative to stimulation onset).

(3) Parameters. We fit the aforementioned data to infer two parameters for each stimulated cell:

- Spont_rate = spontaneous event rate (inferred separately for each protocol repetition).
- Evoked_per_trial = number of events evoked per trial (shared across repetitions and inferred only if the model assumes the cell is connected).

(4) Mathematical formulation.

Model 1 (assuming no synaptic connection):

- Priors:

$$Spont_rate \sim Gamma(rate_mu, rate_sigma)$$

- Distributions:

$$bump = Gamma(\mu = bump_center, \sigma = bump_width)$$

$$unif = Unif(lower = 0, upper = Evoked_time)$$

- Likelihood:

$$Num_events_spont \sim Poisson(Spont_rate \times Spont_time)$$

$$Num_events_evoked \sim Poisson(Spont_rate \times Evoked_time)$$

$$Event_times \sim Mixture([bump, unif], weights = [0, 1])$$

Model 2 (assuming synaptic connection):

- Priors:

$$Spont_rate \sim Gamma(rate_mu, rate_sigma)$$

$$Evoked_per_trial \sim Gamma(Evoked_per_trial_mu, Evoked_per_trial_sigma)$$

- Distributions:

$$bump = Gamma(\mu = bump_center, \sigma = bump_width)$$

$$unif = Unif(lower = 0, upper = Evoked_time)$$

- Likelihood:

$$Num_events_spont \sim Poisson(Spont_rate \times Spont_time)$$

$$Num_events_evoked \sim Poisson(Spont_rate \times Evoked_time + Evoked_per_trial)$$

$$w = Evoked_per_trial / (Evoked_per_trial + Spont_rate \times Evoked_time)$$

$$Event_times \sim Mixture([bump, unif], weights = [w, 1 - w])$$

These two models were fit in PyMC3 using NUTS.

(5) Model comparison. Since the two rate-and-time models use the same priors and fit the same likelihoods, we compared them using expected log pointwise predictive density (ELPD) using Pareto-smoothed importance sampling leave-one-out cross-validation (PSIS-LOO-CV)⁸⁴. Specifically, the two models were combined into a single model using the Bayesian bootstrap-pseudo-Bayesian model averaging (BB-pseudo-BMA) method⁸⁵ applied to the PSIS-LOO calculated using the “compare” function of the ArviZ package⁸⁶. This procedure gives weights to the two models (connected and not connected) which sum up to 1. These weights can be interpreted as the probability of the particular model to be correct, assuming that one of the models is indeed correct. We used the weight of the rate-and-time connected model (model 2) as the output of the procedure (w_{rt}).

(6) Bayesian “rate-only” and “time-only” models. The rate-and-time models described above combine the information from both the rates and the times of EPSCs. However, for some cell pairs, the time information may indicate a bump implying a connection, while the rates may suggest no extra evoked events over the expected spontaneous rate (or the opposite: the rate information may imply a connection while the time information does not). Such borderline cell pairs may be misclassified by these models. To resolve this, we further fit two pairs of reduced versions of the rate-and-time models.

Models 3 and 4: A pair of “time-only” models where we only used the Mixture likelihood of the event times. As with the rate-and-time models, one of the time-only models assumes no synaptic connection (model 3), and the other assumes a connection (model 4). For this pair of time-only models we used priors with distribution $Beta(\alpha = 2, \beta = 2)$ on the weight of the bump directly. Note that the model which assumes no connection (model 3) has no priors.

Models 5 and 6: A pair of “rate-only” models where we only used the Poisson likelihoods of the rates. As before, one model assumes no connection (model 5) and the other assumes a connection (model 6). We used the same priors for spontaneous rate (Spont_rate) and evoked per trial (Evoked_per_trial).

The posteriors of these pairs of models (models 3–6) were similarly sampled using NUTS. ELPD was calculated and the relative weights of the connected and not connected hypotheses were calculated the same way as for models 1 and 2 (rate-and-time). We used the weights of the connected models (models 4 and 6) as the outputs of the procedure (w_t and w_r).

(7) Connectivity determination. To determine whether a stimulated cell is connected to the corresponding recorded cell, we relied both on the models and on manual observation. Cells whose weights of the connected models (models 2, 4, and 6) crossed a threshold, namely $w_{rt} \geq 0.5$ cells satisfying $(w_{rt} \geq 0.5) \wedge (w_t \geq 0.4) \wedge (w_r \geq 0.4)$, were considered as putatively connected. The use of the “rate-only” (w_r) and “time only” (w_t) models in the criterion ensured that we only considered cells to be connected if both types of information agreed independently that the cell is likely to be connected, thus helping reduce false classifications. For manual identification of synaptic connections, traces recorded during stimulation of each cell were aligned to stimulation onset and observed in search of EPSCs that appear near the stimulation with high reliability and low jitter. Cases of disagreement between the model and the manual observation ($n = 212$ stimulated cells) were reexamined manually and settled by manual observation (leaving $n = 177$ cases of disagreement). Cases where manual observation was uncertain ($n = 44$ stimulated cells) were settled by the criterion above, namely $(w_{rt} \geq 0.5) \wedge (w_t \geq 0.4) \wedge (w_r \geq 0.4)$. Performance of the model (Figure 2E,F) was measured after handling all cases of disagreement and uncertainty as described.

(8) Bump estimation. For the connected cells, we used another Bayesian model (model 7) to estimate the location and width of the bump in EPSCs. Since the bump represents the distribution of evoked EPSCs, we used this model in order to calculate the strength of synaptic connection (see below). This model was similar to the rate-and-time model assuming synaptic connection (model 2), except for the use of a normal distribution for the bump (which also makes calculations numerically more stable) and that the center and the

width of this normal distribution have prior distributions for which we infer the posteriors (for determining connectivity, these were fixed numbers and thus it was always the same bump).

Model 7 (assuming synaptic connection with variable bump):

- Priors:

$$bump_center \sim \text{Gamma}(\mu = bump_center_mu, \sigma = bump_center_sigma)$$

$$bump_width \sim \text{BoundedGamma}(\mu = bump_center_mu, \sigma = bump_center_sigma, lower_bound = 3.0, upper_bound = 8.0)$$

$$Spont_rate \sim \text{Gamma}(rate_mu, rate_sigma)$$

$$Evoked_per_trial \sim \text{Gamma}(Evoked_per_trial_mu, Evoked_per_trial_sigma)$$

- Distributions:

$$bump = \text{Normal}(bump_center, bump_width)$$

$$unif = \text{Unif}(lower = 0, upper = Evoked_time)$$

- Likelihood:

$$Num_events_spont \sim \text{Poisson}(Spont_rate \times Spont_time)$$

$$Num_events_evoked \sim \text{Poisson}(Spont_rate \times Evoked_time + Evoked_per_trial)$$

$$w = Evoked_per_trial / (Evoked_per_trial + Spont_rate \times Evoked_time)$$

$$Event_times \sim \text{Mixture}([bump, unif], weights = [w, 1 - w])$$

Measurement of synaptic connection strength. The timing of evoked EPSCs could not be accurately predicted due to the jitter in presynaptic spike and in postsynaptic response, such that spontaneous EPSCs occurring adjacent to stimulation could be mistaken for evoked EPSCs. To minimize this potential error, we used the normal distribution which describes the time distribution of evoked EPSCs (the bump) from model 7 described above. The strength of synaptic connection at each stimulation was thus taken as the weighted average of the EPSCs during a 2–30 ms time window following that stimulation, where the weight of each EPSC was determined by the probability density function of the fitted normal.

Logistic regression model. To understand which features contribute to connectivity, we fit a logistic regression model from the features of the cell pairs to their binary connectivity. For this analysis we used all pairs of stimulated (candidate presynaptic) cells and their

corresponding recorded (postsynaptic) cells in the entire mPFC. We removed cell pairs where the stimulated cell was excluded according to the criteria detailed below (removing 2376 pairs), as well as cell pairs where not all of the intrinsic electrophysiological properties of the postsynaptic cell could be measured (removing 689 pairs). This left $n = 7752$ cell pairs used for the model.

(1) Preprocessing. First, to have all the features on similar scales, we log-transformed features that were only positive or spanned many orders of magnitude (adaptation index, bursting index, membrane capacitance, output gain, input resistance, and spike half-width), and logit-transformed features that took values between 0 and 1 (sag ratio), so that the distribution of each feature was similar to a normal distribution with relatively low skewness and kurtosis. We included the cell type features (“mPFC-BLA to mPFC-BLA connection” and “mPFC-BLA to non-mPFC-BLA connection”) as either 0 or 1 (where “random to random connection” was encoded as 0 for both cell type features). In order to compare the relative contribution of the features to connectivity, they must also be normalized, such that the relative magnitudes of the regression coefficients correspond to the information gained by a change in feature value in units of its standard deviation. However, several features in the data have strong correlations with each other, demonstrating multicollinearity (see Figure S7B for correlations between electrophysiological properties). This makes the interpretation of the coefficients difficult, as they no longer correspond to the amount of information gained by a change of value in each feature. To resolve the multicollinearity, we applied a robust zero-phase components analysis (ZCA) transform to both whiten and normalize the data, so that all the pairwise correlations are removed, and the variance along each transformed feature is 1. We used the SciPy⁸¹ implementation of the minimum covariance determinant estimator⁸⁷ (MinCovDet) to estimate the correlation matrix, which we eigen-decomposed to calculate the ZCA transform.

(2) Sparsity-inducing Horseshoe priors. We next performed feature selection to reduce noise and to capture the predictive features in the data. For this, we used a Bayesian generalized linear model whose posteriors of the model were sampled using a MCMC method. We applied Horseshoe priors⁵⁴ using the formulation in ref. 55 and based on its PyMC3⁸³ implementation in <https://mellorjc.github.io/HorseshoePriorswithpymc3.html>.

- Priors:

$$v = 3$$

$$r_{local} \sim Normal(\mu = 0, \sigma = 1) \quad [\text{for each feature}]$$

$$r_{global} \sim Normal(\mu = 0, \sigma = 1)$$

$$\rho_{local} \sim InverseGamma(\alpha = 0.5 \times v, \beta = 0.5 \times v) \quad [\text{for each feature}]$$

$$\rho_{global} \sim InverseGamma(\alpha = 0.5, \beta = 0.5)$$

$$z \sim Normal(\mu = 0, \sigma = 1) \quad [\text{for each feature}]$$

$$\beta_0 \sim Normal(\mu = -3.67, \sigma = 1)$$

$$\tau = r_{global} \times \sqrt{\rho_{global}}$$

$$\lambda = r_{local} \times \sqrt{\rho_{local}}$$

$$\beta = z \times \lambda \times \tau$$

$$\mu_{logit} = X \cdot \beta + \beta_0$$

where X is the ZCA-transformed features (model input data).

- Likelihood:

$$observed_data \sim Bernoulli(p = InverseLogit(\mu_{logit}))$$

We sampled the posteriors from this model using NUTS⁸² in PyMC3. We selected features whose median posterior coefficient was larger than 0.05 in absolute value as features which provide significant information about connectivity (Figure 4H). The reason for this choice is that a ± 0.05 coefficient value corresponds to a change of 0.05 in log odds (which in turn corresponds to a change of approximately 5% in odds) when the value of the feature moves by 1 standard deviation from its mean.

(3) Unregularized, cross-validated logistic regression and cross-entropy calculations. To quantify the information that the features have on connectivity, we used an unregularized, cross-validated logistic regression model implemented in Matlab using the `glmfit` function. We used the preprocessed features and $n = 191$ stratified cross-validations (equal to the number of connected cell pairs in the dataset to have one connected pair per fold). We calculated the cross-entropy between the model prediction \hat{y} (continuous probability) and the true connections y (binary) as

$$H = (1/n) \times (-y \cdot \log(\hat{y}) - (1 - y) \cdot \log(1 - \hat{y}))$$

where n is the number of cell pairs in the test set (or the total number of cell pairs in the dataset in case of no cross-validation). We ran this model and calculation using all features, using only the selected features, and using the selected features minus one of them, and for each run we calculated the distribution of cross-entropies across the cross-validations as well as the cross-entropy when running the model without cross-validation (Figure 4I). The same stratified folds were used for all cross-validations so that models using different features could be compared using a paired test (see Statistics below). As control, we ran the model using shuffled connections (without cross-validation) and calculated the cross entropy between the prediction using shuffled connections and the true connections across 10000 shuffles. As another control, we calculated the cross-entropy between the true connections and a constant connection probability of 0.025 (the mean connection probability across all cell pairs).

Subtracting evoked photocurrents. While recording from an stCoChR-expressing cell, stimulation of some targeted cells can evoke unwanted photocurrents in the recorded cell. This is a result of imperfect restriction of the channelrhodopsin molecules to the soma, and can obscure EPSCs. To resolve this, we identified cells whose stimulation evoked direct photocurrent by manually observing the recording traces after aligning them to the stimulation pulse. Photocurrents were identified by their minimal latency and jitter, their reliability and their reproducible waveform across consecutive stimulations of the same cell (Figure 2C). Cells whose stimulation evoked photocurrent stronger than 20 pA at the soma of the recorded cell were excluded from analysis. Traces corresponding to cells whose stimulation evoked ≤ 20 pA photocurrent were manually examined for synaptic connections by searching the stimulation-aligned traces for reliable, low-jitter EPSC occurrences. Cases where stimulation evoked a compound response consisting of both a photocurrent and an EPSC were identified by the rapid rise constant of the EPSC as compared with the photocurrent (e.g., Figure 2C, left, third cell). In order to remove the photocurrent so as to accurately measure these EPSCs, we identified stimulation-aligned traces where no EPSCs were evoked (within a time window of 30 ms after stimulation), and subtracted the mean of these photocurrent-containing traces from the rest of the traces. The resulting traces contained only EPSCs with approximately no photocurrent. Synaptic strength for each stimulation was then calculated by subtracting the mean of a baseline

window preceding stimulation (−20 to +2 ms relative to pulse onset) from the minimum of a window following stimulation (+2 to +25 ms relative to pulse onset). In order to improve separation of evoked photocurrents from EPSCs, we repeated the stimulation protocol in several of the recorded cells, in the presence of APV (25 μM) and CNQX (10 μM) to block glutamate transmission (Figure 2C). We then subtracted the mean of the traces obtained in presence of glutamate-receptor blockers from the corresponding traces without blockers.

Quantification of intrinsic electrophysiological properties. At the beginning of recording from each cell (prior to the synaptic-mapping protocol), a series of square current pulses (~ −200 to +400 pA, interval 25–50 pA) were injected in current-clamp mode (unless the intracellular solution was Cs-based). Input resistance R_{in} was calculated based on the peak hyperpolarization during injection of the smallest negative current. Membrane capacitance C_m was calculated based on R_{in} and on the membrane time constant τ_m , using an exponential fit $[a \times (1 - e^{-t/\tau_m}) + c]$ of 10 to 90% of the peak hyperpolarization during injection of the smallest negative current. Maximal firing rate was taken as the maximal rate among all injected current pulses. Output gain was taken as the slope of the input-output curve in the range between the minimal and maximal firing rates. Bursting and adaptation indices were based on traces with closest to 80% of the maximal firing rate per cell. Bursting index was taken as the ratio between the second and the first ISIs. Adaptation index was taken as the ratio between the last and the second ISIs. Spike half-width, amplitude, and threshold were calculated based on the first spike in the trace with the lowest firing rate (that is, the first evoked spike). Sag ratio was based on the trace with the strongest hyperpolarizing current, and calculated as $(V_{min} - V_{ss}) / (V_{min} - V_{bl})$, where V_{min} is the minimal voltage during the first 30% of the hyperpolarizing pulse, V_{ss} is the steady-state voltage during the pulse, and V_{bl} is the baseline just before the pulse.

Transformation of cell coordinates into brain-reference anatomical positions. In order to standardize the coordinates of all cells (pre- and postsynaptic) across all experiments and calculate their positions in the brain, three orthogonal planes were defined for each slice. The anatomical position of each cell was based on its distance from each of these planes. (1) A slice-surface plane was defined by a collection of points ($n = 17.4 \pm 0.64$) on the surface of the scanned volume. Recorded slices typically had small curvatures on their

surface, possibly caused by the harp that is used to hold them in place during recording, creating an angled volume surface relative to the image plane ($\theta = 11.2 \pm 0.7^\circ$). The points used to define this plane were imaged during the scanning of the volume for connectivity mapping. Distance from this plane defined a cell's depth inside the slice (referred to as AP position). (2) A midline plane was defined by passing through the dorsal end and the ventral end of the midline of the slice (both ends were recorded) and by being orthogonal to the slice-surface plane. Distance from this plane defined the ML position of the cell. (3) A dorsal-end plane was defined by passing through the dorsal end of the slice and by being orthogonal to the other two planes. The distance from this plane defined the DV position of the cell. The DV and ML positions of each cell were then projected on a reference Atlas image (Unified Anatomical Atlas project, <https://kimlab.io/brain-map/atlas/>) that matched the slice's AP position relative to bregma, which was determined based on anatomical landmarks such as the shape of the corpus callosum. The region of the cell was determined by its projected coordinates on the corresponding intensity-labeled Atlas image, using a Matlab script. The layer was determined based on Figure S4.

Compensation for light power attenuation inside the tissue. In all experiments, we maintained light power constant on cell bodies located at different depths in the tissue by compensating for scattering with increased light power. To calculate the light power at the focal point as function of its depth in the brain slice, we designed an “inverse fiber” model. We used an existing model to calculate the spatial distribution of power in tissue for an optic fiber with given NA, tip radius and wavelength⁸⁸. We modeled the power distribution for a point fiber (tip of 1 μm) with properties as in our system (NA = 1.0 and $\lambda = 940 \text{ nm}$). At a given distance d below the fiber, the acceptance angle of the fiber, set by the NA, defines a circular plane centered at the fiber axis and perpendicular to the fiber axis. By symmetry, the integrated light density over this plane is equivalent to the light power at the focal point when an objective with the same NA focuses into depth d in the tissue. With this model, we found that the dependence of light power on depth in the tissue fits monoexponential decay with $\tau_{\text{decay}} = 147.6 \mu\text{m}$. We modulated the absolute light power accordingly throughout all experiments.

Analysis of GCaMP6s fluorescence and validation of spiking in response to stimulation. The fluorescence trace recorded during a single spiral-pattern scan (as in Figure 1D) was averaged such that a complete spiral was treated as one time point. To determine whether a targeted cell spiked in response to spiral scanning, we calculated the slope of GCaMP6s fluorescence using a linear fit over the raw GCaMP6s fluorescence trace obtained during the entire spiral-scan train (10 or 15 spirals). Notably, when scanning populations of cells in the presence of TTX, GCaMP6s fluorescence can still accumulate, supposedly due to strong light-induced depolarization without spiking (Figure 1H, middle). We found that the slope of the raw GCaMP6s fluorescence trace across a spiral train generally decreases after application of TTX (Figure 1G, bottom; Figure 1H, right; and Figure S2B). We therefore used the lower 95% confidence bound of the raw GCaMP6s fluorescence slope as a measure for spiking. Cells whose lower 95% confidence bound was negative were excluded from analysis. For calculation of GCaMP6s $\Delta F/F_0$, the first spiral in the train was taken as baseline (F_0), due to the slow onset kinetics of GCaMP6s relative to spiral duration.

Exclusion of interneurons from connectivity analysis. The AAV vectors encoding for stCoChR and for GCaMP6s are both under the ubiquitous EF1 α promoter. To express stCoChR and GCaMP6s in a sparse, random set of mPFC cells and map connectivity among random mPFC cells, we injected a low-titer AAV-Cre vector into the mPFC which was either under the EF1 α promoter or under the more pyramidal cell-specific CaMKII α promoter (see above, under *AAV expression plasmids*). This could lead to expression of stCoChR and GCaMP6s in interneurons. To minimize the resulting bias, we excluded from analysis any cell whose stimulation evoked hyperpolarizing currents in the recorded cell (under a -70 mV clamp). In some of the experiments, we repeated the sequential stimulation under a depolarized holding potential (-60 to -40 mV, and 0 mV in cases the intracellular solution was Cs-based) to facilitate identification of inhibitory connections. Since connections from interneurons to pyramidal neurons appear at very high probabilities, both in sensory cortex⁶ and specifically in the mPFC^{70,89}, and since interneurons are estimated to amount to $\sim 20\%$ of cortical neurons⁹⁰, the remaining stimulated interneurons that were not connected to the recorded cell likely introduce a very small bias to connection probability.

Summary of exclusion criteria. Stimulated (candidate presynaptic) cells were excluded from analysis if they met at least one of these conditions: Lower 95% confidence bound for the slope of the raw GCaMP6s fluorescence trace across the spiral train was negative; stimulation evoked a direct photocurrent larger than 20 pA; stimulation evoked an IPSC; recording trace during stimulation was too noisy or leaky.

Data analysis. Detection and modeling of synaptic events and analysis of synaptic connectivity were performed using custom scripts written in Matlab and in Python. Analysis of GCaMP6s fluorescence was performed using Matlab. Analysis of electrophysiological recordings for intrinsic properties was performed using Matlab and Clampfit (Molecular Devices). Image analysis was performed using Matlab and Fiji. Statistical analysis was performed in Matlab. Data are presented as mean \pm SEM unless otherwise stated.

Statistics. In comparisons of connectivity features between map types (Figure S5A) and in comparisons of electrophysiological properties between cell types (Figure 4D,E and Figure S7A), we used the Kruskal-Wallis test with multiple post hoc comparisons using Tukey's Honestly Significant Difference (HSD) procedure. Two-way analysis of variance (ANOVA) was used to test interaction between connection type and layer (Figure 3D). Wilcoxon signed rank test was used for comparing weighted synaptic input along the mediolateral axis (Figure 3E) and along the dorsoventral axis (Figure 3F), for comparing connectivity measures above and below the recorded cell (Figure S5E), and for comparing spatial specificity (FWHM) of spiking vs. GCaMP6s $\Delta F/F_0$ (Figure S3B). Two-sample Kolmogorov-Smirnov test was used for comparing properties of automatically vs. manually detected cells (Figure S1D,E). To compare regression models to the model using all (and only) selected features (Figure 4I), the same cross-validations were used for all models (except for the shuffled connections and mean connection prediction), and a paired-sample Student's t-test was performed. The model using shuffled connections did not use cross validation and therefore the comparison with the model using selected features was performed with a two-sample Student's t-test. Finally, to compare the mean probability prediction model, one-sample t-test was used.

Markov chain Monte Carlo (MCMC) sampling parameters. The MCMC sampling in the cell connectivity determination was done using the NUTS algorithm in PyMC3 with 5000 steps for tuning for a ‘target_accept’ of 0.95 and 2000 steps after the tuning for sampling in 4 independent chains. We used the ‘jitter+adapt_full’ initialization. The MCMC sampling for the Horseshoe-prior logistic regression was done using the NUTS algorithm in PyMC3 with 10000 steps for tuning for a ‘target_accept’ of 0.95 and 2000 steps after the tuning for sampling in 4 independent chains. We used the ‘advi+adapt_diag’ initialization with a maximum of 50000 steps for initialization.

Supplementary Data and Discussion

The effect of spatial specificity of stimulation on measured probabilities of synaptic connection. Targeted optogenetic stimulation of one cell may lead to co-stimulation of adjacent cells, depending on the local density of opsin-expressing cells. If two (or more) adjacent cells respond with spiking and with elevated GCaMP6s fluorescence to stimulation of either one of them, and only one (or some) of them is synaptically connected to the recorded cell, it will seem as though both (or all) stimulated cells are connected to the recorded cell, introducing an overestimation bias. To address this scenario, we manually registered the positions of all labeled cells in four scanned brain-slice volumes. For each cell in each volume, we defined an ellipsoid centered at the center of mass of the cell. The primary axes of the ellipsoid were defined as the FWHM of the spiking probability at the corresponding axes (Figure S3C–E). We calculated the number of cells that fall within this ellipsoid as a proxy for the probability to stimulate two (or more) cells together. The fraction of cells having at least one neighboring cell within their FWHM ellipsoid was 0.13 ± 0.02 (Figure S3C, blue). Among the cells having adjacent within-ellipsoid neighbors, the number of neighbors was 1.06 ± 0.02 (Figure S3D, blue). The fraction of cell pairs, among all possible pairs in a scanned volume, that are within each other’s ellipsoid was $4.2 \times 10^{-4} \pm 3.2 \times 10^{-5}$ (Figure S3E, blue). These data suggest that in ~13% of cells targeted for photostimulation, two cells might be co-stimulated instead of only one. In the case where all opsin-expressing cells in the volume are sequentially stimulated and respond with spiking, the probability of synaptic connection is therefore overestimated, on

average, by 13%. This is because 13% of the connected cells are expected to lie adjacent to a cell that is being co-stimulated with them and is also targeted separately for stimulation. However, in our hands, only $58 \pm 7\%$ of the total opsin-expressing cells in a scanned volume are targeted for stimulation. When stimulating a subset of the opsin-expressing cells in a tissue volume during a mapping experiment, an additional 13%, on average, are effectively being stimulated. Since the number of connections found in each experiment is not affected by these unintended stimulations, the actual connection probability may be lower by 11.5% than that calculated in our experiments. We did not correct for this bias. Importantly, it only affects the absolute probability of connections. It does not affect calculations involving connection strength or the identity of the connected and non-connected cells (such as laminar distribution of connections and prediction of connectivity using the regression model in Figure 4).

Estimate of the total number of connected cells from the EPSC distribution. The distribution of stimulation-aligned EPSCs in our data (Figure 2B) can be used to estimate the expected number of connected presynaptic cells in the entire dataset.

Let E be the total number of synaptic events in Figure 2B, f be the fraction of events in the evoked bump (and $1-f$ the fraction of events in the uniform part), N be the number of stimulated cells, c be the fraction of connected cells among all stimulated cells, n be the average number of stimulations on each targeted cell (including protocol repetitions), and e_p be the average number of evoked EPSCs per stimulation for a connected cell.

Then the number of evoked events can be expressed as

$$\#evoked_events = E \times f = (N \times c) \times n \times e_p$$

The fraction of connected cells can therefore be estimated as

$$\hat{c} = \frac{E \times f}{N \times n \times e_p}$$

From the data used in Figure 2B, $E = 151797$, $N = 10445$, $n = 27.2 \pm 0.14$, and $f = 0.046$ (the weight of the Gamma in the mixture model). Assuming $e_p = 0.5$ (a combination of the number of evoked spikes per spiral from Figure S2C with synaptic failure), we get

$$\hat{c} = \frac{151797 \times 0.046}{10445 \times 27.2 \times 0.5} = 0.049$$

This value roughly resembles the fraction of connected cells in our dataset (excluding stimulated cells that evoke a direct photocurrent in the recorded cell, and keeping all other cells regardless of their GCaMP6s signals): $c = 243/10445 = 0.023$.

The effect of acute brain slice preparation on connectivity. One of the major drawbacks of our methodology is that the connections are measured in acute brain slices, and not in the live animal. During the slicing of the brain, neuronal projections are inevitably cut. We took several measures to minimize the loss of neuronal connections due to this cutting process: we recorded from coronal slices, which are cut parallel to the axis of the apical dendrites of pyramidal cells in the mPFC; we recorded from cells located relatively deep in the brain slice (depth in slice = $66.9 \pm 2.0 \mu\text{m}$, range 26.7–125.1 μm); and we stimulated presynaptic cells spanning the entire depth of the slice, thereby mapping inputs from cells that are otherwise inaccessible using the conventional multiple-patch configuration. By estimating the fraction of the anatomical axodendritic overlap volume between the pre- and postsynaptic neurons that is removed after slicing, a recent study suggested that the cutting process scales down connection rates globally, with little bias to specific connection types⁹¹. Other studies using similar anatomical simulations suggest that within the intersomatic displacement ranges used in our dataset, $\geq 60\%$ of the synaptic contacts remain intact in 300 μm -thick brain slices^{71,92}. Only a few studies have directly examined functional synaptic connectivity *in vivo*. Connection probabilities from L2/3 pyramidal neurons onto nearby interneurons in the barrel cortex seem similar *in vivo* and *in vitro*^{93,94}, and among pyramidal neurons the connections *in vivo* seem even sparser than *in vitro*^{73,94}. This may be attributed to increase in synapse density after slicing, as observed in hippocampal slices⁹⁵. To quantify the possible loss of synapses due to severing of projections, we performed the following analysis. For each connectivity map in our dataset, we considered two groups of presynaptic cells: one containing all the cells that are located in the volume between the slice surface and the depth of the recorded (postsynaptic) cell, and another containing all the cells located in the volume between the depth of the recorded cell down to twice its depth. Since these two groups reside in equally sized tissue volumes, and they differ only in their distance from the cut surface, the difference in connectivity features between them represents the downscaling of connections caused by slicing. We found that connection probability deeper in the slice was 1.77 times higher than close to

the surface (0.038 vs. 0.021; Figure S5E). Mean connection strength did not differ between the two volumes (16.6 pA below vs. 16.2 pA above the recorded cell; Figure S5E). This downscaling of connections is expected to be approximately uniform across map types⁹¹, allowing us to compare the connection probabilities and strengths between them. Therefore, the artefacts of the slicing process should not undermine the comparative qualities of our findings.

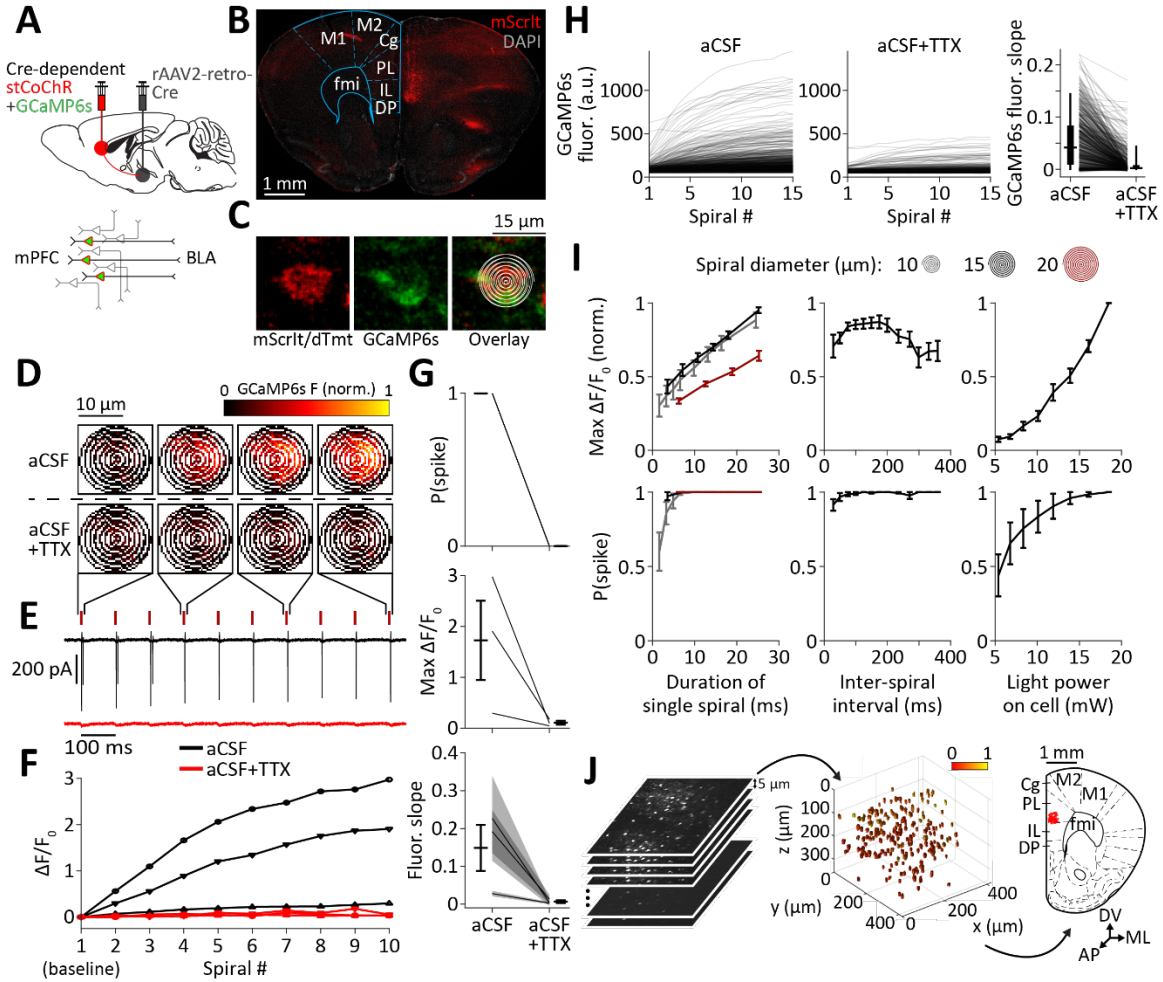


Figure 1. Simultaneous optogenetic stimulation and GCaMP6s-based spike readout using a single laser source. **A**, Top, Intersectional viral strategy for expressing stCoChR (co-expressed with mScarlet) and GCaMP6s (co-expressed with nuclear dTomato) in mPFC cells projecting to the BLA (mPFC-BLA cells). Bottom, Schematic of expression of stCoChR and GCaMP6s exclusively in mPFC-BLA cells. **B**, Confocal image of a coronal section showing expression of stCoChR and GCaMP6s in mPFC-BLA cells. **C**, Two-photon images of a cell targeted for spiral scanning, with the spiral-scan pattern overlaid (right). **D–E**, Cell-attached recordings from an mPFC-BLA cell expressing stCoChR and GCaMP6s. Trains of 10 spiral patterns (7.1 ms each) were scanned at 10 Hz over the soma as in **C** to excite stCoChR and GCaMP6s, and GCaMP6s fluorescence was recorded during the scan of each spiral. **D**, Raw GCaMP6s fluorescence (normalized to the maximum) during four selected spirals in absence of TTX (top, aCSF) and after

application of TTX to block spiking (bottom, aCSF+TTX). **E**, Cell-attached recording traces from the same cell shown in **D**, in absence (black) and presence (red) of TTX. Red ticks denote spiral-scan times. **F–G**, Cell-attached recordings from three mPFC-BLA cells during spiral scanning as in **D–E**. **F**, GCaMP6s $\Delta F/F_0$ without TTX (black) and with TTX (red) over 10 spirals for each cell. Plotted symbols indicate individual cells. **G**, Probability for at least one spike per spiral (top), maximal GCaMP6s $\Delta F/F_0$ (middle), and slope of the linear fit of the raw GCaMP6s fluorescence trace (bottom), with and without TTX. Shaded regions in the fluorescence slope indicates the 95% confidence interval of the slope for each cell. Here and elsewhere, error bars indicate mean \pm SEM, unless indicated otherwise. **H**, Raw GCaMP6s fluorescence of automatically detected mPFC-BLA cells across 15 spirals scanned at 10 Hz, in absence (left) and presence (middle) of TTX (see **J** for the soma-detection process). Right, Slope of GCaMP6s fluorescence traces for the same cells. Vertical lines inside boxes indicate median, boxes indicate 25th and 75th percentiles, and whiskers represent 5th and 95th percentiles. $n = 645$ cells from six slices in two mice. See also Figure S2B. **I**, Effects of scan parameters on maximal GCaMP6s $\Delta F/F_0$ (top; normalized per cell to the maximal value across conditions) and on probability for at least one spike per spiral (bottom). Cell-attached recordings were acquired from mPFC-BLA cells expressing stCoChR and GCaMP6s, while the cells were scanned with trains of 10 spirals. The following scan parameters were varied: diameter and duration of each spiral (left; $n = 11$ cells; light power on cell = 13.9 mW, inter-spiral interval = 100 ms), time interval between consecutive spirals (middle; $n = 11$ cells; light power on cell = 13.9 mW, spiral duration = 3.6 ms), and light power on cell (right; $n = 10$ cells; spiral duration = 3.6 ms, inter-spiral interval = 100 ms). See Figure S2C for additional measurements. **J**, Process of targeting a group of cells for photostimulation and imaging. First, a two-photon image stack is acquired (left). An algorithm then automatically detects the cell bodies within the acquired image volume (middle; color scale indicates relative fluorescence intensity) and targets the detected cells for consecutive individual stimulation and imaging using spiral scans. Finally, the positions of the cells are transformed into brain-reference anatomical coordinates (right; the same cells are shown in red overlaid on a reference coronal atlas image). Cortical region abbreviations: Cg, cingulate; PL, prelimbic; IL, infralimbic, DP, dorsal peduncular; M1,

primary motor; M2, secondary motor. fmi, forceps minor of the corpus callosum. DV, dorsoventral axis; ML, mediolateral axis; AP, anteroposterior axis.

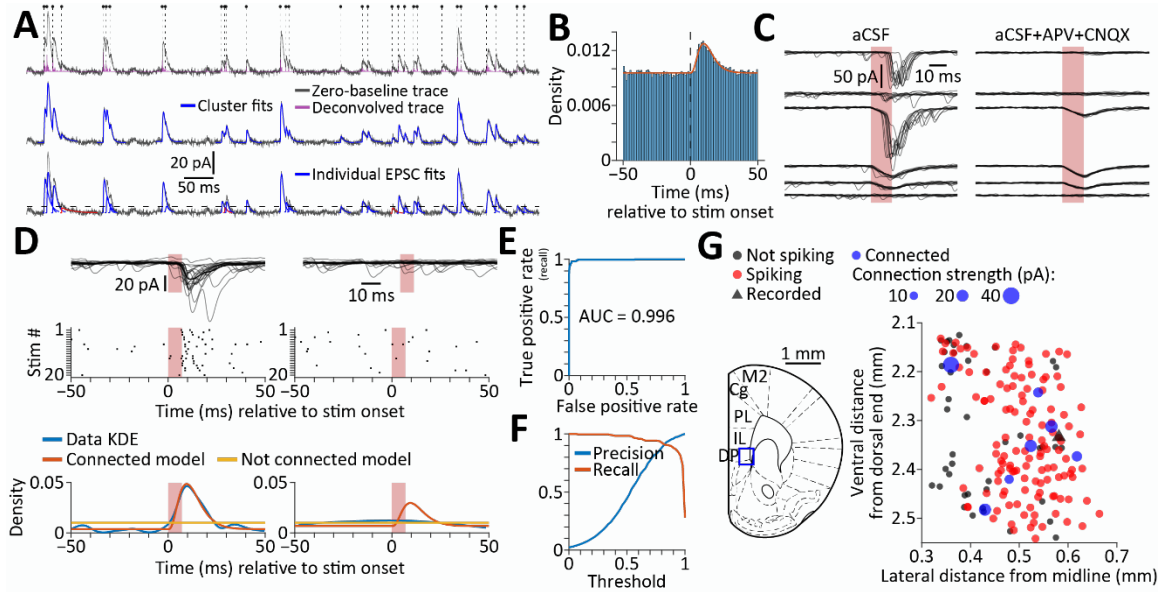


Figure 2. Analysis and modeling of synaptic connections. **A**, Detection and modeling of excitatory postsynaptic currents (EPSCs) in continuous voltage-clamp recording traces obtained during stimulation of candidate presynaptic cells. Top, The zero-baseline version of the inverted recording trace (gray) was deconvolved with a synaptic-event waveform kernel using OASIS (purple trace). Putative EPSCs were detected based on peaks in the deconvolved trace. Dots and vertical dashed lines mark the fitted onset times of detected events (see Bottom). Middle, Putative events were then clustered by temporal proximity, and each cluster was fit with a model which assumes linear summation of EPSCs (blue traces). Bottom, Clustered events were decomposed and their kinetic features were extracted. EPSCs with amplitude below a $2.5 \widehat{SD}$ threshold (dashed line) were discarded (red traces). **B**, Peristimulus time histogram of EPSCs ($n = 151797$ EPSCs recorded during stimulation of $n = 10445$ cells, bin size = 1 ms), overlaid with a fitted mixture model of gamma and uniform distributions. Parameter fits [95% confidence interval]: Gamma shape $k = 4.1896$ [3.7063, 4.6729]; gamma scale $\theta = 3.0942$ [2.6602, 3.5283]; weight $w = 0.0455$ [0.0421, 0.0489]. Only stimulated cells that did not evoke any direct photocurrent in the recorded cell were considered for this distribution.

C, Example traces obtained during stimulation of six mPFC-BLA cells while recording from another mPFC-BLA cell (left), and during repeated stimulation in the presence of glutamate-receptor blockers (right). The top three cells were synaptically connected to the recorded cell, and the bottom three were not. Note the compound photocurrent+EPSC response in the third cell (see Methods). **D**, Identification of synaptic connections based on EPSC distribution. Top, Overlaid traces recorded during stimulation of a synaptically connected cell (left) and a non-connected cell (right). Red shaded area denotes stimulation period, shaded lines are individual traces ($n = 20$ per cell), and dark lines indicate mean of all traces. Middle, Raster plots of the EPSCs. Bottom, Estimated probability density functions of the EPSC times, using either a model that assumes synaptic connection or a model that assumes no connection. The kernel density estimation (KDE) of the true EPSC times is presented as reference. **E–F**, Connectivity model performance, based on $n = 10445$ cell pairs, of which 243 are synaptically connected. **E**, Receiver operating characteristic curve. **F**, Precision and recall as a function of the model score threshold. **G**, A representative synaptic connectivity map describing the functional inputs onto a recorded mPFC-BLA cell from neighboring mPFC-BLA cells. Blue box on Atlas image (left) marks the anatomical location of the map.

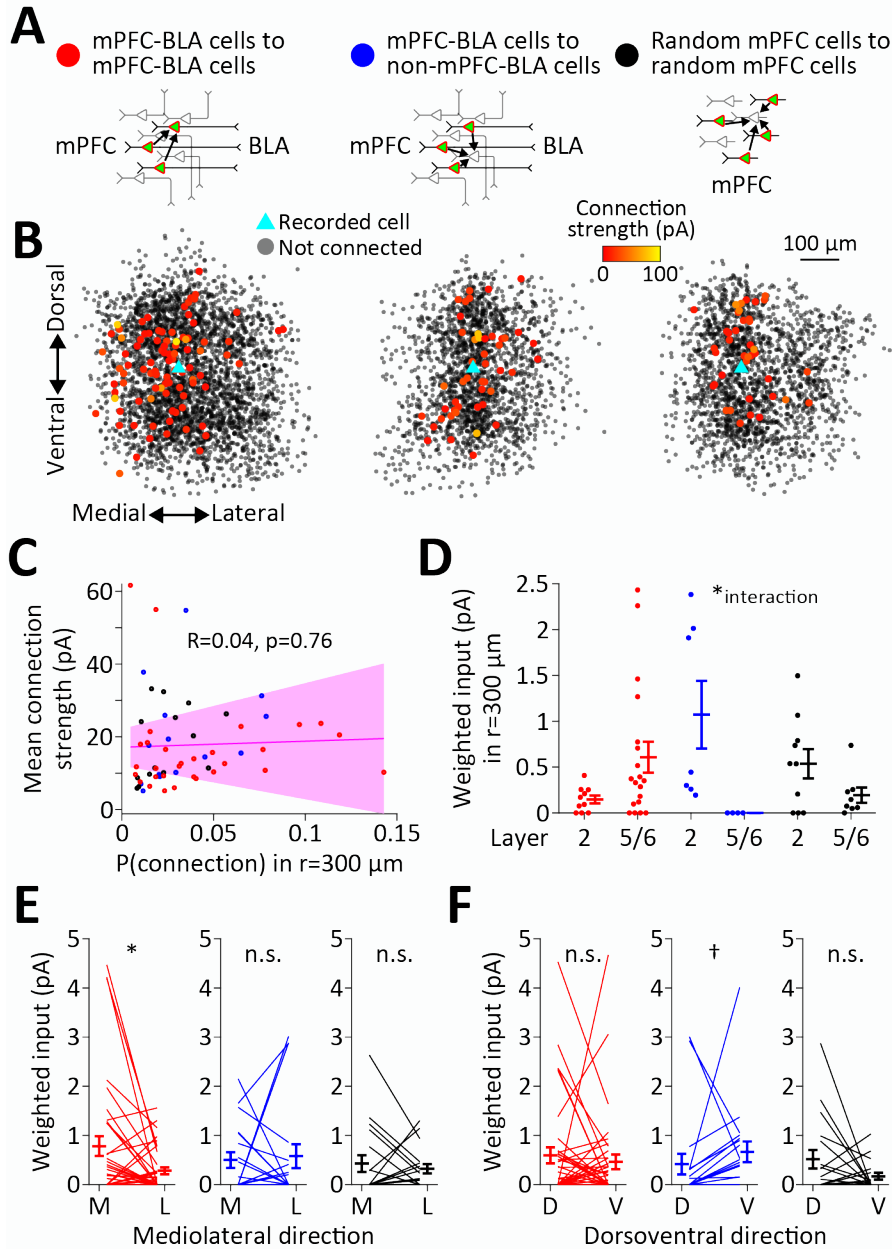


Figure 3. Functional synaptic connectivity in cell populations of the ventral mPFC.

A, Description of the three types of synaptic connections measured. **B**, Overlay of all connectivity maps obtained for each connection type in **A**. Stimulated cells are in shaded black, and connected (presynaptic) cells are color coded for connection strength. All cell locations are relative to their corresponding recorded (postsynaptic) cell position (within the same map), which is presented as a cyan triangle at the center of the overlaid maps. Positions along the depth of the slice (anteroposterior axis) are collapsed. **C**, Lack of correlation between the probability of connection and connection strength across all

connection types ($n = 38$ cells in mPFC-BLA to mPFC-BLA connections, $n = 19$ cells in mPFC-BLA to non-mPFC-BLA connections, and $n = 18$ cells in random mPFC to random mPFC connections). The shaded region around the regression line represents the 95% confidence bounds. **D**, Weighted synaptic input according to the layer of the postsynaptic cell, for each connection type. Zero weighted input indicates that none of the stimulated cells was connected to the recorded cell. * Two-way ANOVA interaction effect between layer and connection type, $F_{(2)} = 6.7$, $p = 0.003$. See also Figure S5. **E**, Weighted synaptic input as function of mediolateral position of the stimulated cells relative to the postsynaptic recorded cell. * $p = 0.029$; n.s. $p \geq 0.67$. **F**, Weighted synaptic input as function of dorsoventral position relative to the recorded cell. † $p = 0.091$; n.s. $p \geq 0.22$.

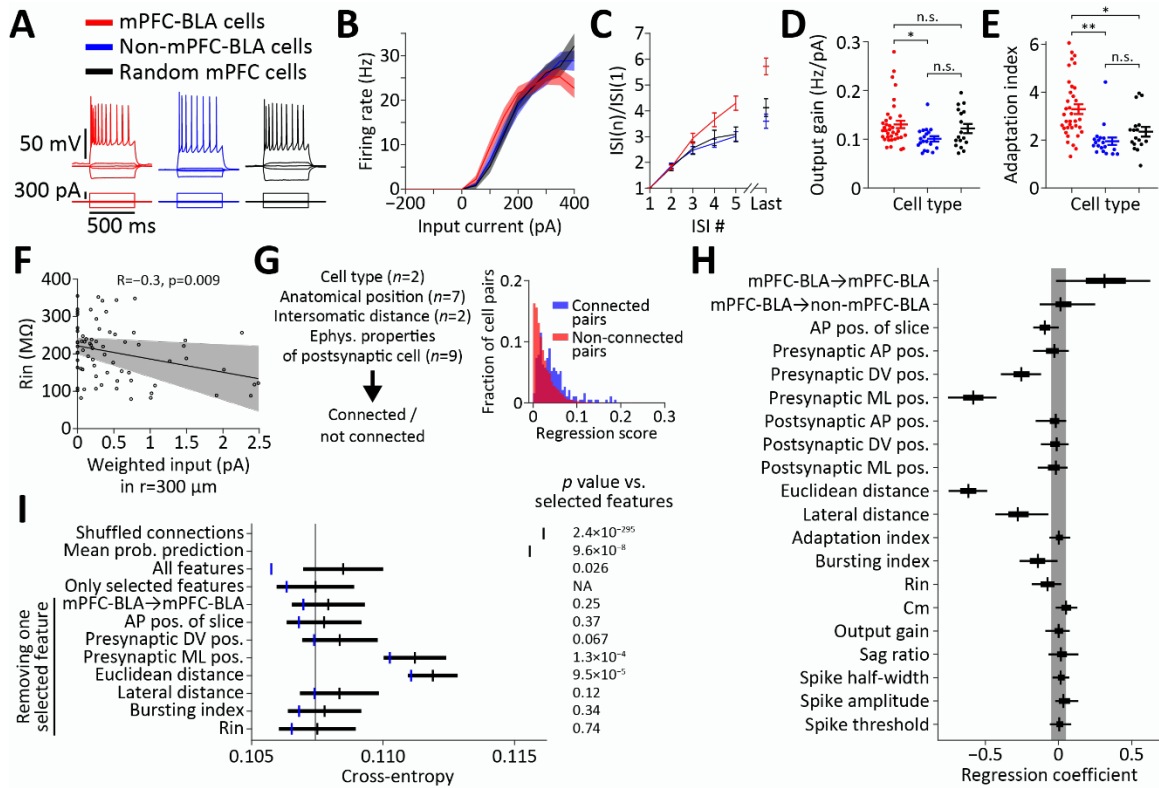


Figure 4. Determinants of functional synaptic connectivity among mPFC pyramidal neurons. **A–E**, Electrophysiological properties of cell populations in the ventral mPFC ($n = 36$ mPFC-BLA cells, $n = 19$ non-mPFC-BLA cells, and $n = 17$ random cells). **A**, Representative current injection traces recorded from the three cell types corresponding to the connectivity maps in Figure 3. **B**, Firing rate as function of injected current for all cell types. Shaded areas represent SEM. **C**, Ratio between the n -th and the first inter-spike intervals (ISIs). ISIs are taken from the current injection traces evoking closest to 80% of the maximal firing rate per cell. **D**, Output gain for each cell type. * $p = 0.015$; n.s. $p \geq 0.26$. **E**, Adaptation index for each cell type. ** $p = 6.0 \times 10^{-6}$; * $p = 0.016$; n.s. $p = 0.24$. See Figure S7A for additional electrophysiological properties and Table 3 for full statistics. **F**, Correlation between weighted input and input resistance across all cell types. **G**, Logistic regression model for predicting connectivity using all available features ($n = 20$ total features; n for each category is mentioned in parentheses) on all cell pairs in the entire mPFC ($n = 7752$ cell pairs). Right, Model score calculated for connected cell pairs and for non-connected cell pairs. **H**, Feature selection performed using Horseshoe priors on the regression model. For each coefficient, the median (vertical line), 25th and 75th

percentiles (box), and 90% highest density interval (HDI, whiskers) of the posterior distribution are shown. Shaded area spans ± 0.05 to represent change of 5% in odds (see Methods). See Figure S8 for the full posterior distributions. **I**, Cross-entropy between predicted connection probability (calculated using logistic regression as in **G**) and true connections, using different sets of features based on their selection in **H**. Cross-entropy of shuffled connections is calculated between true connections and predictions run on shuffled connections ($n = 10000$ shuffles). Mean probability prediction presents the cross-entropy between the true connectivity and a constant connection probability equal to its mean over all data. The bottom rows present cross-entropies calculated when using only selected features, while the denoted one is removed. Vertical lines present the mean and error bars present the SEM of cross-validated distributions of cross-entropies. Vertical blue lines present the cross-entropy calculated without cross-validation. Shaded vertical line indicates the mean of the cross-validated distribution of the model using selected features as reference. Note that the SEM of shuffled connections is too small to be discernible. P values on the right are based on comparison with the model that uses selected features (see Methods).

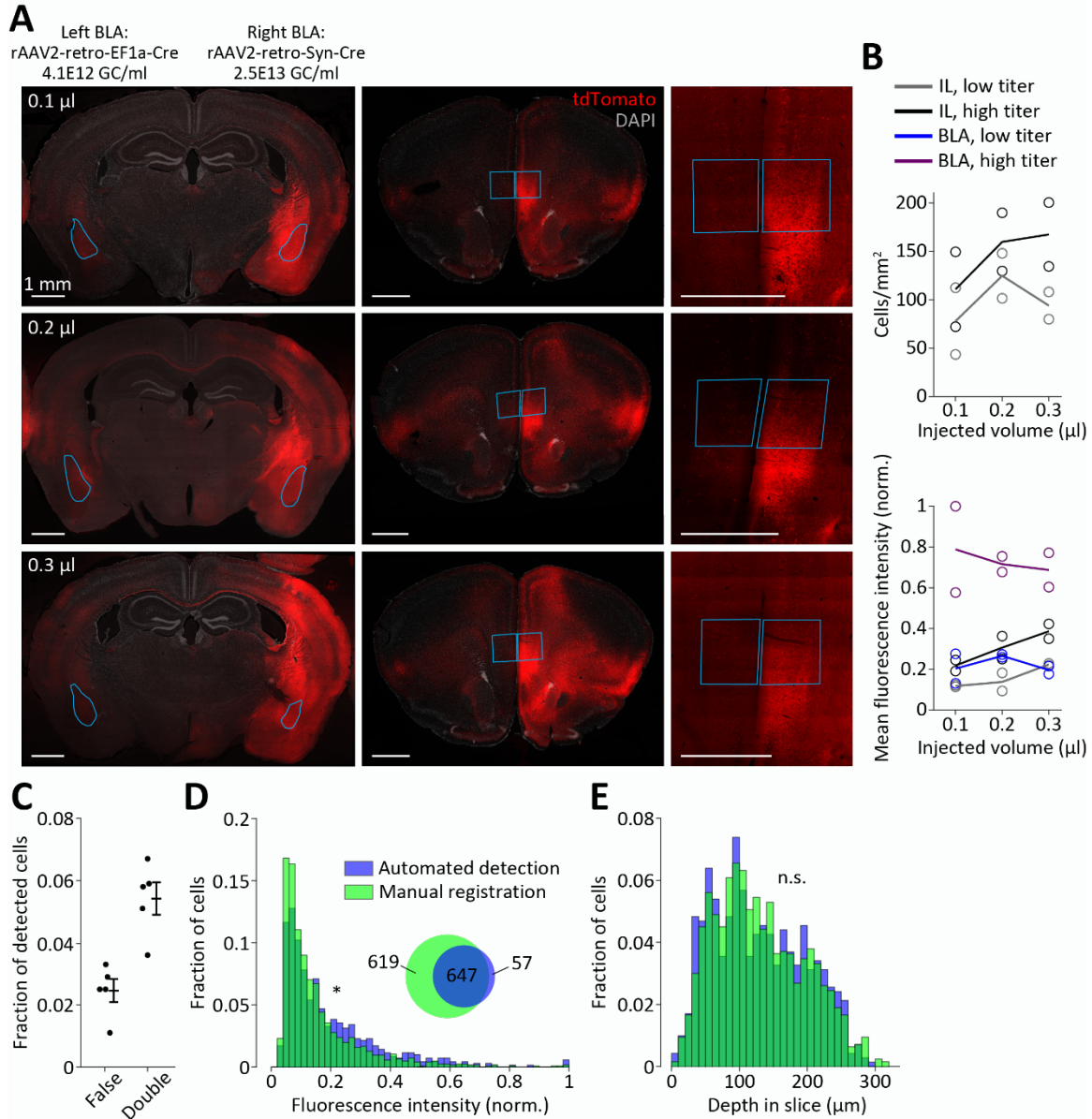


Figure S1. Retrograde labeling of mPFC-BLA cells and automated detection of cell bodies. A–B, Injection of Cre-expressing rAAV2-retro vectors into the BLA of Ai9 mice, which contain a Cre-dependent tdTomato expression cassette. A, Coronal sections (40 μm thickness) containing the BLA (left) and the mPFC (middle and right) of three different mice, each injected with a different volume of the viral vector (top, 100 nl at injection rate of 10 nl/min; middle, 200 nl at 20 nl/min; bottom, 300 at 30 nl/min). The left BLA of each mouse was injected with rAAV2-retro-EF1a-Cre with titer of 4.1×10^{12} genome copies per milliliter (gc/ml), and the right BLA was injected with the same volume of rAAV2-retro-hSyn-Cre with titer of 2.5×10^{13} gc/ml. Images on the right are

high-resolution confocal scans of the mPFC of the same mice as the images in the middle. Notice that rAAV2-retro-Cre leads to retrograde expression of Cre (and thereby tdTomato) in cells at presynaptic sites as well as at the injection site (BLA). This leads to fluorescent cell bodies in the BLA and to dense fluorescent axonal fibers at the mPFC (as well as retrograde cell bodies) which originate at the BLA. All scale bars are 1 mm. **B**, Quantification of cell density (top) and mean fluorescence intensity (bottom) in the mPFC and in the BLA, as a function of injected AAV volume and its titer. $n = 2$ mice for each volume. Circles represent individual mice and lines represent means. Measured regions are marked in cyan in **A** for three of the mice. Cell density in the BLA was not measured due to the high density of axonal fibers originating from retrogradely labeled presynaptic sites. **C–E**, Performance of the algorithm for automated detection of cell bodies in a scanned tissue volume. **C**, Fraction of false detections (where detection does not point to a cell) and double detections (where detection points between two adjacent cells) out of a total of 1046 automated detections in $n = 5$ scanned volumes from two mice. **D**, Distribution of fluorescence intensity across automatically detected cells ($n = 704$) and manually registered cells ($n = 1266$) in four scanned volumes from four mice. * One-tailed, two-sample Kolmogorov-Smirnov test for manually vs. automatically detected cells: $D_{1266,704} = 0.14$, $p = 2.2 \times 10^{-8}$. All intensities are normalized to the maximal fluorescence among all cells within the same volume. Bin size is 0.02. Inset shows a Venn diagram of the manually registered and automatically detected cell bodies. **E**, Distribution of cell positions along the depth of the slice for the same cells as in **D**. Two-sample Kolmogorov-Smirnov test: $D_{1266,704} = 0.04$, $p = 0.49$. Bin size is 10 μm .

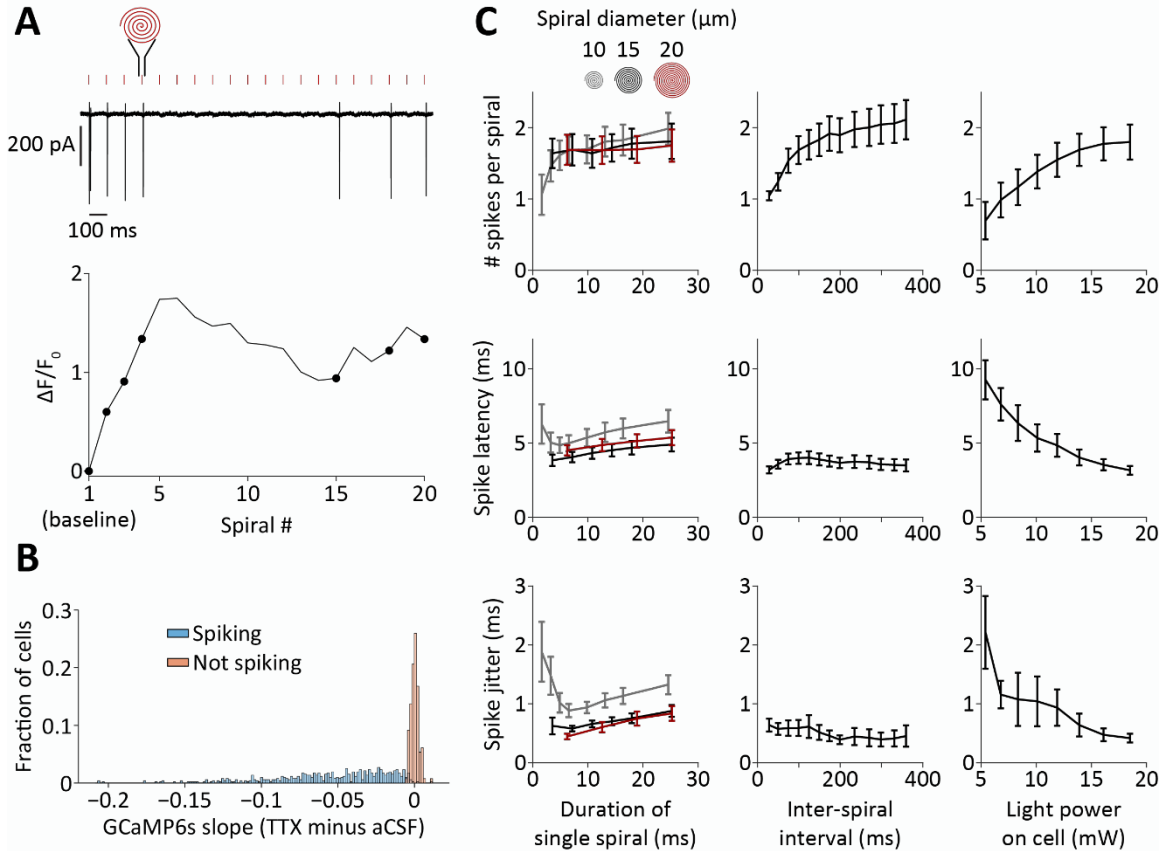


Figure S2. Spiral stimulation parameters and detection of spiking using GCaMP6s.

A, Cell-attached recording (top) and GCaMP6s $\Delta F/F_0$ (bottom) from an mPFC-BLA cell during a train of 20 spirals (3.56 ms each) delivered at 10 Hz. Red ticks denote spiral-scan periods, and spike-triggering spirals are highlighted by circles over the $\Delta F/F_0$ trace.

B, Distribution of the difference between the GCaMP6s fluorescence slope in presence of TTX and its slope in absence of TTX, based on the cells in Figure 1H. The distribution is presented separately for cells that were determined to have spiked (blue) and those that did not spike (red) based on the lower bound of the confidence interval of the GCaMP6s fluorescence slope. Bins are 0.0015.

C, Cell-attached recordings from mPFC-BLA cells expressing stCoChR and GCaMP6s during scanning with trains of 10 spirals. Diameter and duration of each spiral (left; $n = 11$ cells; light power on cell = 13.9 mW, inter-spiral interval = 100 ms), time interval between consecutive spirals (middle; $n = 11$ cells; light power on cell = 13.9 mW, spiral duration = 3.6 ms), and light power on cell (right; $n = 10$ cells; spiral duration = 3.6 ms, inter-spiral interval = 100 ms) were varied, while the

number of evoked spikes per spiral (top), latency to first spike (middle), and jitter of first spike (bottom) were measured. See Figure 1I for additional measurements.

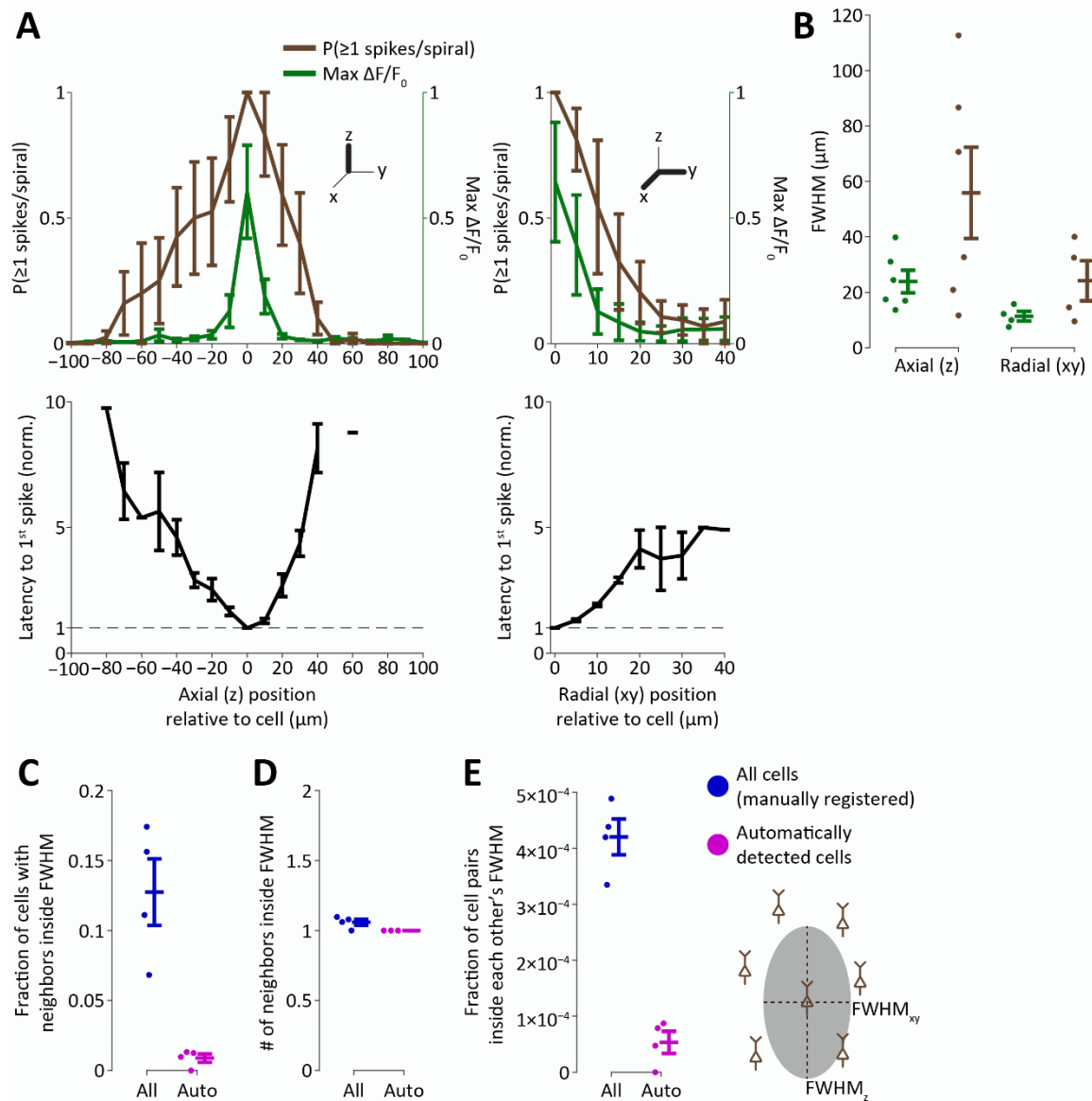


Figure S3. Spatial specificity of stimulation and imaging relative to the labeled-cell density in the slice preparation. **A**, Spatial specificity of stimulation and imaging measured using cell-attached recordings from mPFC neurons while spiral patterns were scanned at varying positions relative to the cell. Left, Specificity across focal planes (axial, z). Right, Specificity within the focal plane (radial, xy). Top, Probability for

evoking at least one spike per spiral (brown) and maximal $\Delta F/F_0$ in a spiral train (green). Bottom, Latency to first spike, normalized to the latency on the cell. $n = 6$ cells for axial specificity and $n = 4$ cells for radial specificity. **B**, Full width at half maximum (FWHM) for axial specificity (left, z) and for radial specificity (right, xy), based on individual-cell data in **A**. FWHM of spiking vs. $\Delta F/F_0$: $p = 0.44$ in z and $p = 0.12$ in xy . **C**, Fraction of cells in a scanned tissue volume which have at least one neighboring cell that is found within their spiking FWHM ellipsoid. Data is presented for all cells in a volume as registered manually (blue) and for cells detected automatically using the soma-detection algorithm (purple). $n = 4$ scanned volumes from four mice. **D**, Mean number of within-FWHM-ellipsoid neighbors, among the cells having within-ellipsoid neighbors. **E**, Fraction of cell pairs, among all possible pairs in a volume, which reside inside each other's FWHM ellipsoid.

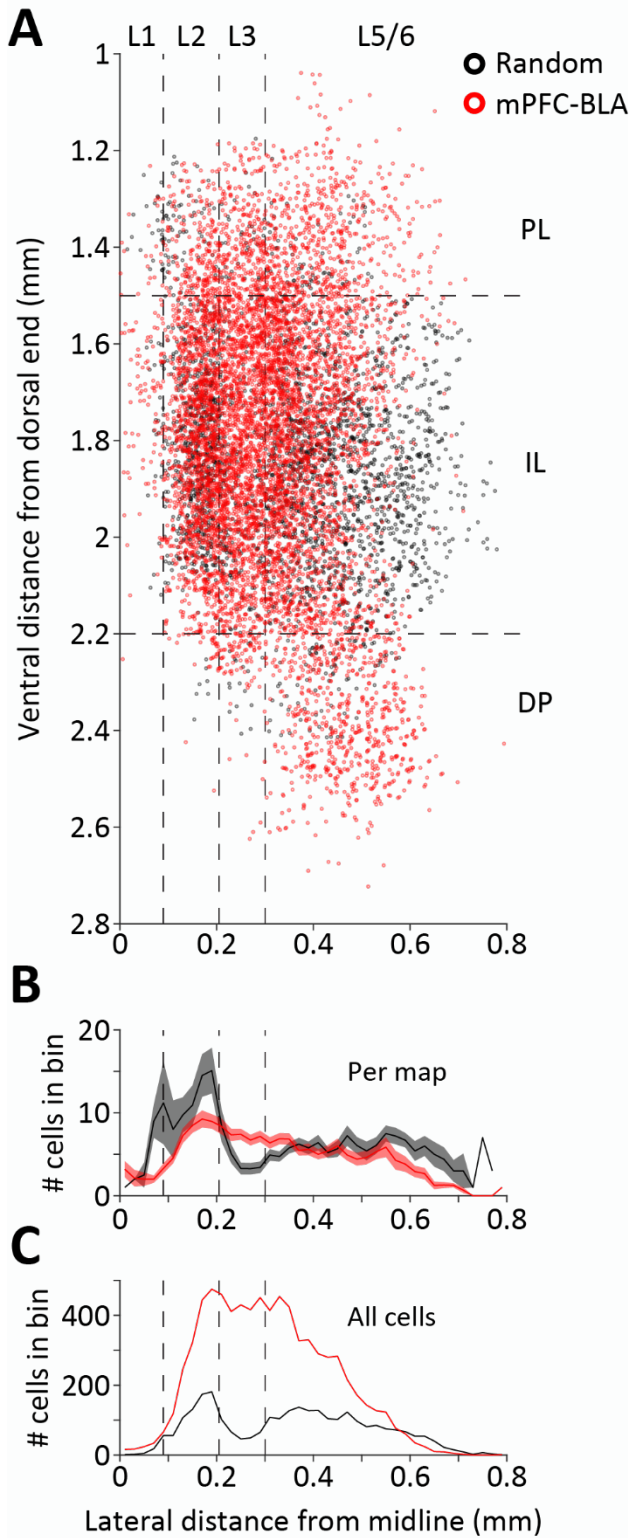


Figure S4. Distribution of stimulated-cell positions in anatomical space. A, Positions of all cells that were stimulated during recording from corresponding cells located

throughout the mPFC (PL, IL, and DP), in dorsoventral (DV) and mediolateral (ML) coordinates. mPFC-BLA cells are in red ($n = 7737$ cells from 67 experiments corresponding to 67 recorded cells), and randomly labeled mPFC cells are in black ($n = 2802$ cells from 22 experiments corresponding to 22 recorded cells). Vertical dashed lines indicate division into layers, based on cell density shown in **B** (layer borders: 90, 205, and 300 μm from midline). L1 contains excitatory projection cells, consistent with known presence of L2 cells in L1 of the mPFC⁹⁶. Horizontal dashed lines indicate division into subregions (PL/IL border: 1.5 mm; IL/DP border: 2.2 mm from dorsal midline edge). Notice that the anteroposterior (AP) position was collapsed (range of AP positions in all experiments: 1.2 to 2 mm from bregma), such that the IL/PL/DP borders are not consistent across experiments and are drawn based on average AP position. **B**, Number of cells in each experiment in 20 μm bins along the ML axis. Shaded areas indicate SEM. Borders of L3 were determined based on local reduction in cell density in the random-cell class. **C**, Total number of cells in all experiments in 20 μm bins.

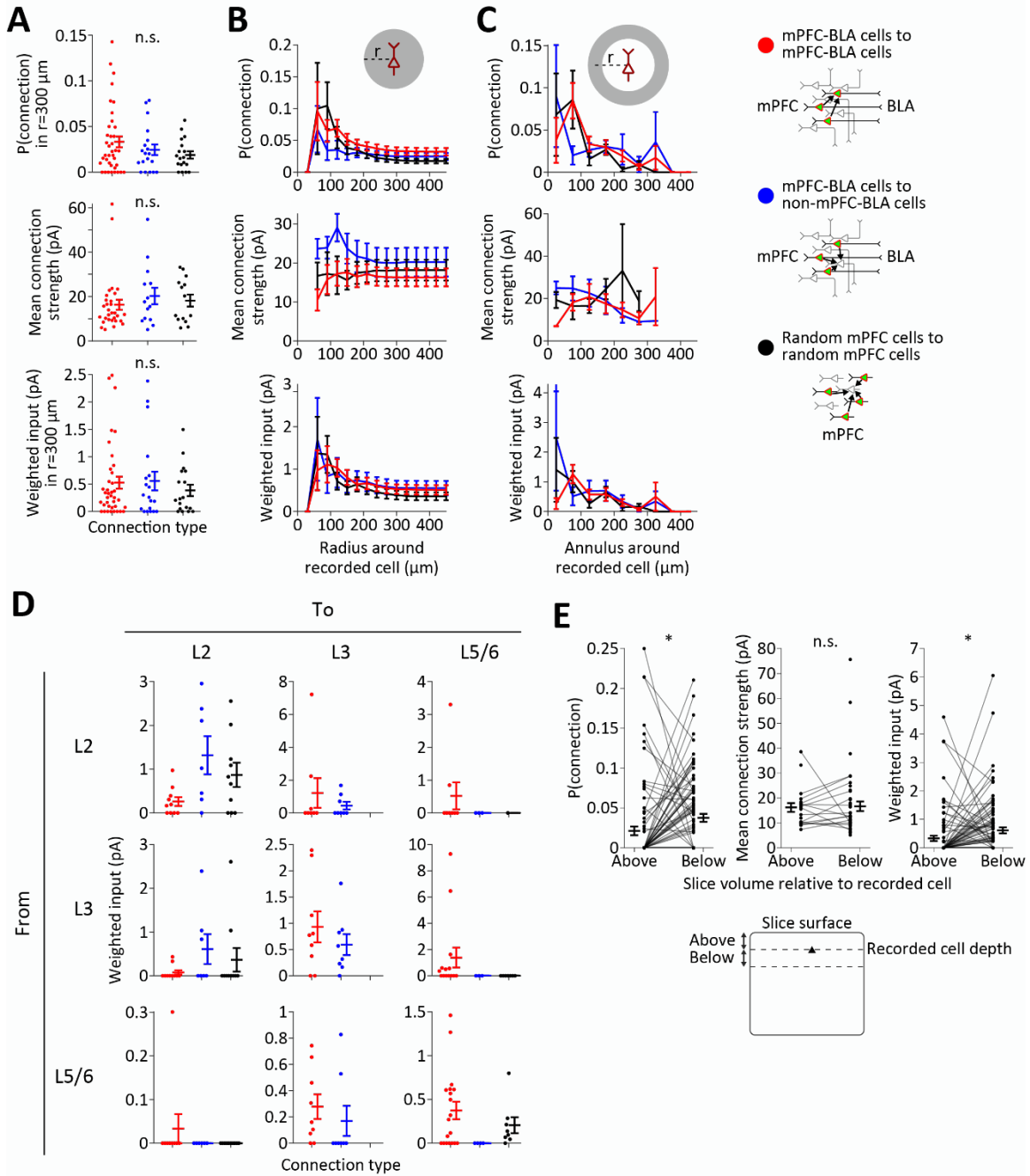


Figure S5. Anatomical distribution of synaptic connections. A, Overall probability of connection within a distance of $300\ \mu\text{m}$ from the recorded cell (top), mean connection strength (middle, with no restriction to the distance from the recorded cell), and weighted input onto the recorded cell within a $300\ \mu\text{m}$ distance (bottom), for each connection type ($n = 38$ cells in mPFC-BLA to mPFC-BLA connections, $n = 19$ cells in mPFC-BLA to non-mPFC-BLA connections, and $n = 18$ cells in random mPFC to random mPFC

connections). Points are individual recorded cells corresponding to single maps, and error bars are mean \pm SEM. Zero probability of connection (and, accordingly, zero weighted input) indicates that the recorded cell did not receive input from the stimulated cells. n.s. $p \geq 0.52$. **B**, Probability of connection (top), connection strength (middle), and weighted input (bottom) as function of the radius of the sphere around the recorded cell where connections are measured. **C**, Probability of connection (top), , connection strength (middle), and weighted input (bottom) as function of the center of the annulus (50 μm thickness) around the recorded cell where connections are measured. **D**, Summary of cross-layer connections measured by weighted input. **E**, Connectivity properties arising from the slice volume located above the recorded cell and from an equally sized volume below the recorded cell. $n = 92$ cells of all types in the entire mPFC. * $p = 0.006$; n.s. $p = 0.30$.

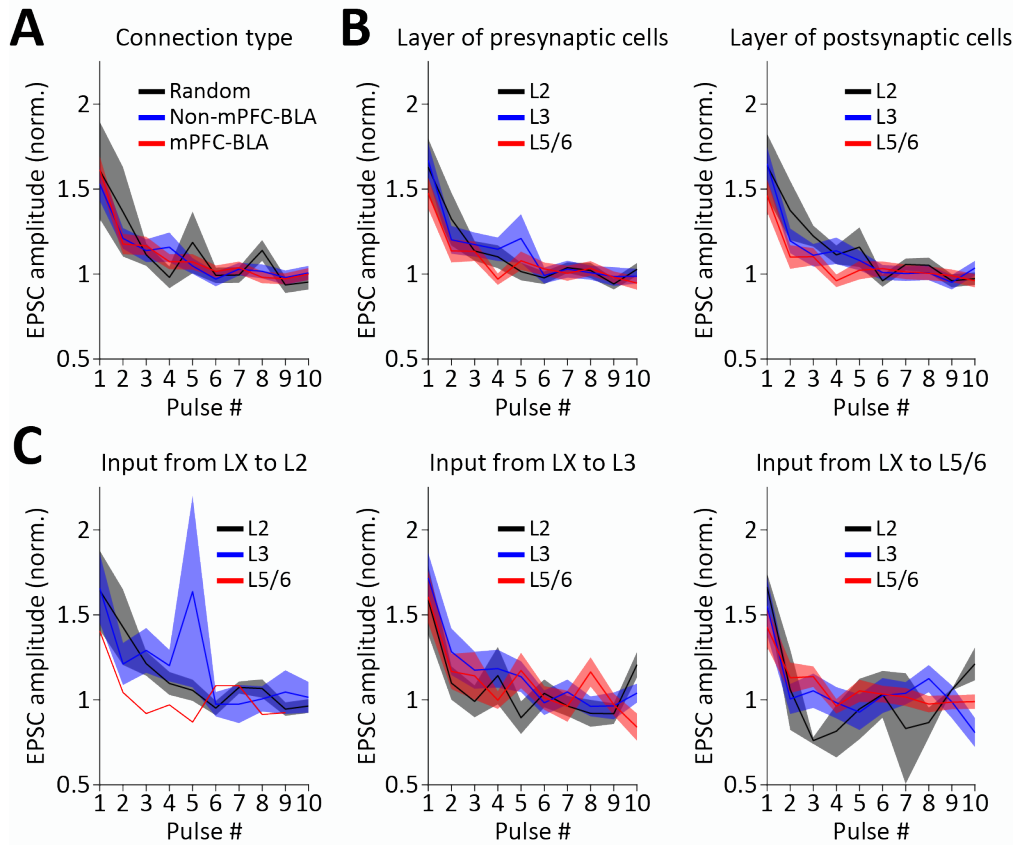


Figure S6. Short-term plasticity of synaptic connections. **A**, Amplitude of evoked EPSC as function of the stimulation pulse, normalized to the mean of the last five pulses, for the three connection types as in Figure 3A. Only the first 10 pulses were considered in experiments with a 15-pulse train, and in experiments with multiple repetitions of the stimulation protocol, all repetitions were averaged. **B**, Same as **A**, but pooling all connection types and separating according to the layer of the presynaptic cells (left) or layer of the postsynaptic cells (right). **C**, Same as **B**, but pooled according to both the presynaptic and the postsynaptic cell layer.

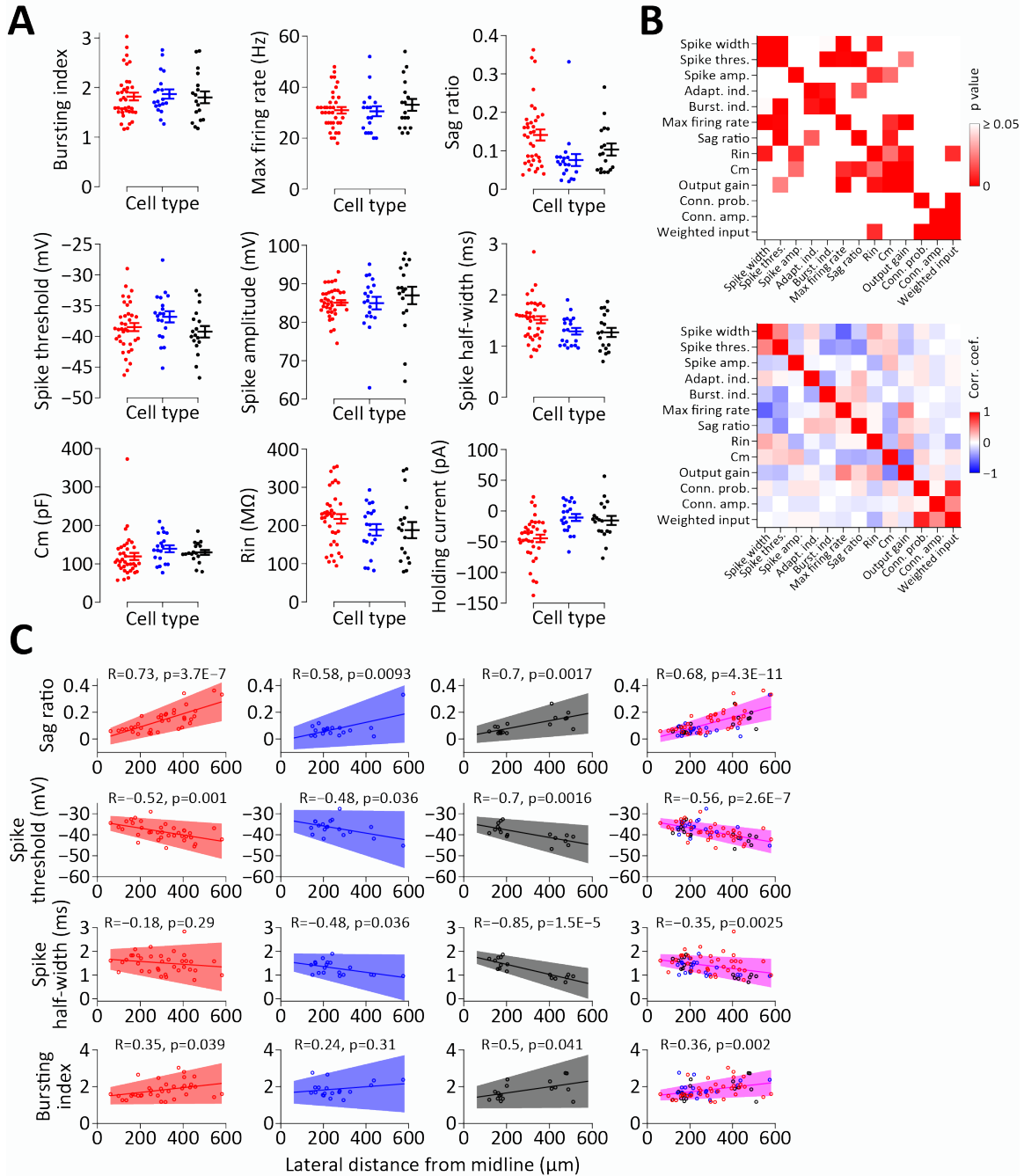


Figure S7. Electrophysiological properties of pyramidal neuron populations in the ventral mPFC. **A**, Electrophysiological properties of the different cell types. Color code as in Figure 4. See Figure 4B–E for additional properties. Notice that the apparent difference in sag ratio between the cell types stems from this parameter’s correlation with mediolateral position (**C**) and the larger fraction of mPFC-BLA cells in L5/6 compared with the other cell types (Table 1). **B**, Pairwise correlations between electrophysiological

properties and connectivity properties. Top, P values of pairwise correlations. Bottom, Correlation coefficients for pairwise correlations. Connection probability, connection amplitude, and weighted input are calculated as in Figure S5A. **C**, Correlation between cells' mediolateral position and their electrophysiological properties, for each cell type and for all cells pooled (right). Lines are linear fits and shaded regions represent 95% confidence intervals of the linear fit. Magenta (right) represents fits for all cells pooled.

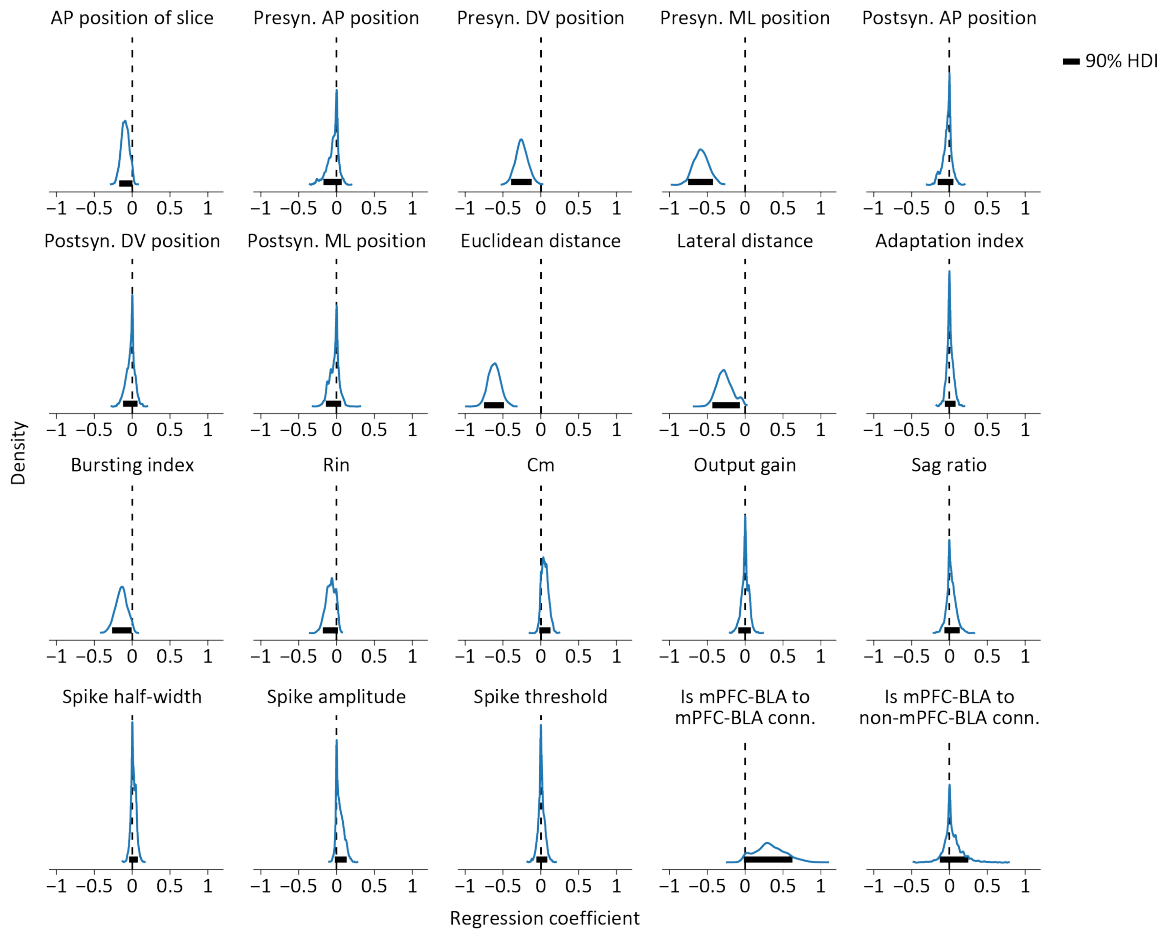


Figure S8. Posterior distributions of regression coefficients calculated using Horseshoe priors. Thick horizontal lines represent the 90% highest density interval (HDI). Density scaling is identical for all features. See Figure 4H for summary of the distributions.

Table 1. Total numbers of cells and animals in each experiment type.

			Map type		
			mPFC-BLA to mPFC-BLA	mPFC-BLA to non-mPFC-BLA	Random to random
Number of postsynaptic cells (maps)	Ventral mPFC (IL+DP)	L2	10	7	10
		L3	9	8	0
		L5/6	19	4	8
	Dorsal mPFC (PL+Cg)	All layers	9	2	6
Number of stimulated cells (responsive) *, **	Ventral mPFC (IL+DP)	L2	883	586	1169
		L3	1161	846	0
		L5/6	1439	500	913
	Dorsal mPFC (PL+Cg)	All layers	659	150	474
Number of animals ***	Ventral mPFC (IL+DP)	L2	7	6	4
		L3	8	5	0
		L5/6	14	3	6
	Dorsal mPFC (PL+Cg)	All layers	8	2	4

* In this Table, all stimulated cells within a given map are considered to be in the same layer as the postsynaptic cell of the same map.

** Only stimulated cells determined to have spiked in response to stimulation by their GCaMP6s signal are counted.

*** The same animal can be counted multiple times when it was used for recording from cells in different regions or from different cell types (mPFC-BLA cells and non-mPFC-BLA cells). $n = 38$ animals were used in total for recording in this study.

Table 2. Numbers of cells per each individual experiment.

Map type	Recorded (postsynaptic) cell		Stimulated cells			
	Region	Layer	# total	# spiking	# included *	% spiking
mPFC- BLA to mPFC- BLA	IL	5/6	45	35	34	77.8
	IL	2	204	143	138	70.1
	IL	3	160	141	129	88.1
	IL	3	116	89	81	76.7
	IL	3	246	242	228	98.4
	IL	3	179	159	154	88.8
	DP	5/6	32	13	13	40.6
	DP	5/6	236	234	233	99.2
	PL	5/6	245	215	112	87.8
	PL	5/6	169	72	70	42.6
	IL	5/6	118	104	101	88.1
	PL	5/6	79	67	65	84.8
	IL	5/6	94	83	81	88.3
	PL	3	63	21	20	33.3
	IL	2	152	130	128	85.5
	PL	2	89	49	48	55.1
	PL	5/6	41	21	21	51.2
	IL	3	186	166	162	89.2
	IL	5/6	175	153	152	87.4
	PL	3	117	97	95	82.9
	PL	2	77	61	61	79.2
	DP	5/6	179	136	131	76.0
	IL	3	118	111	106	94.1
	IL	5/6	88	56	56	63.6
	PL	3	93	56	54	60.2
	IL	2	94	74	70	78.7
	IL	5/6	56	43	43	76.8
	IL	2	94	82	81	87.2
	IL	2	66	54	54	81.8
	IL	5/6	95	45	44	47.4
	IL	5/6	59	26	20	44.1
	IL	5/6	64	42	40	65.6
IL	3	76	50	44	65.8	
DP	5/6	90	63	47	70.0	
DP	5/6	119	67	67	56.3	

	IL	3	126	121	108	96.0
	IL	5/6	89	63	58	70.8
	IL	5/6	80	51	50	63.8
	IL	2	40	31	31	77.5
	IL	2	78	76	71	97.4
	IL	2	103	87	78	84.5
	IL	2	111	96	84	86.5
	IL	2	145	110	109	75.9
	IL	3	113	82	79	72.6
	IL	5/6	118	101	101	85.6
	IL	5/6	134	93	92	69.4
	IL	5/6	47	31	31	66.0
mPFC- BLA to non- mPFC- BLA	Cg	5/6	118	88	88	74.6
	IL	3	246	225	224	91.5
	IL	2	148	70	68	47.3
	IL	5/6	211	194	194	91.9
	IL	5/6	113	106	106	93.8
	IL	3	100	88	88	88.0
	IL	3	93	79	78	84.9
	IL	2	110	86	86	78.2
	IL	2	66	35	35	53.0
	DP	5/6	181	136	136	75.1
	IL	2	101	90	90	89.1
	IL	2	124	106	106	85.5
	IL	2	135	110	110	81.5
	IL	5/6	70	64	64	91.4
	IL	3	114	77	77	67.5
	IL	3	151	131	130	86.8
	IL	3	109	102	101	93.6
	IL	3	104	99	99	95.2
	IL	2	100	89	88	89.0
	PL	3	92	62	62	67.4
IL	3	71	45	45	63.4	
Random to random	IL	5/6	155	143	141	92.3
	Cg	5/6	91	78	78	85.7
	IL	5/6	106	105	104	99.1
	IL	5/6	106	104	102	98.1
	IL	5/6	156	137	135	87.8
PL	5/6	109	63	63	57.8	

PL	5/6	142	129	129	90.8
PL	5/6	50	43	42	86.0
PL	5/6	126	115	114	91.3
IL	5/6	151	132	131	87.4
IL	5/6	163	143	142	87.7
IL	5/6	129	109	109	84.5
IL	2	104	90	88	86.5
IL	5/6	117	40	40	34.2
Cg	2	69	46	46	66.7
IL	2	201	193	161	96.0
IL	2	148	144	142	97.3
IL	2	158	152	138	96.2
IL	2	93	72	70	77.4
IL	2	73	57	57	78.1
IL	2	176	170	166	96.6
IL	2	85	68	63	80.0
IL	2	157	147	121	93.6
IL	2	97	76	75	78.4

* Cells included in the analysis, after exclusion of all stimulated cells according to criteria detailed in Methods.

Table 3. Statistics for electrophysiological properties of all cell types.

Property	Cell type									Kruskal-Wallis test		Post hoc comparisons (p value)			
	mPFC-BLA			Non-mPFC-BLA			Random mPFC			χ^2	p value	mPFC-BLA vs. non-mPFC-BLA	mPFC-BLA vs. random	Non-mPFC-BLA vs. random mPFC	
	n	Mean	SEM	n	Mean	SEM	n	Mean	SEM						
Rm (M Ω)	36	217.4	12.3	19	188.8	15.0	17	188.1	21.1	2.7	0.26	0.49	0.29	0.93	
Cm (pF)	36	119.2	9.2	19	139.2	8.8	17	129.6	6.5	6.0	0.051	0.063	0.23	0.89	
Max firing rate (Hz)	36	30.9	1.3	19	30.5	1.9	17	33.1	2.4	0.56	0.75	0.97	0.82	0.75	
Output gain (Hz/pA)	36	0.13	0.0077	19	0.10	0.005	17	0.12	0.010	7.8	0.020	0.015	0.83	0.28	
Adaptation index	36	3.3	0.21	19	1.95	0.16	17	2.3	0.20	24.1	5.8 $\times 10^{-5}$ *	6.0 $\times 10^{-5}$ *	0.016	0.24	
Bursting index	36	1.82	0.078	19	1.87	0.095	17	1.80	0.12	0.69	0.71	0.74	0.99	0.74	
Sag ratio	36	0.14	0.014	19	0.076	0.015	17	0.10	0.016	11.7	0.0029	0.0021	0.25	0.31	
Spike threshold (mV)	36	-38.5	0.66	19	-36.8	0.91	17	-39.3	0.93	3.9	0.14	0.24	0.86	0.16	
Spike half-width (ms)	36	1.52	0.069	19	1.29	0.065	17	1.27	0.09	6.3	0.044	0.10	0.10	1.00	
Spike amplitude (mV)	36	85.1	0.66	19	85.0	1.6	17	87.0	2.2	3.3	0.19	0.94	0.17	0.39	
Holding current (pA)	34	-44.6	6.2	19	-10.7	5.7	18	-15.2	7.4	15.2	5.0 $\times 10^{-4}$ *	0.0013	0.014	0.83	

Table 4. Parameters used for detection and modeling of EPSCs.

Parameter	Value	Description
Detrending parameters		
f_sample	5000 Hz	Frequency to which the signal was downsampled (using the resample_poly function)
order_filter_len	50 ms	Sliding window of the 10 th percentile filter
f_to_decimate	200 Hz	Frequency to which the percentile-filtered trace was downsampled to find the baseline
Median filter order	3 points	Median filter width applied to the 200 Hz signal
\widehat{SD}	1.4826×MAD	Standard deviation was estimated robustly using this formula, where MAD is the median absolute deviation around the median.
Deconvolution parameters (OASIS)		
noise_factor	0.8	Noise is this factor × \widehat{SD}
τ_{decay}	3.5 ms	Decay time constant of the kernel
τ_{rise}	0.7 ms	Rise time constant of the kernel
Kernel formula	$n \times \exp(-t/\tau_{decay}) \times (1 - \exp(-t/\tau_{rise}))$	where n normalizes the peak to 1
max_iter	10	Number of iterations OASIS algorithms runs for
penalty	1	1 means it uses the L1 penalty to sparsely reconstruct the signal.
oasis.functions.deconvolve		The function in the OASIS library used for the deconvolution
Peak detection parameters		
noise_factor	0.5	Minimum peak height and prominence is this factor × \widehat{SD}
split_gap_ms	2.0 ms	Minimum gap between two peaks
conv_filt_ms	2.5 ms	Width of the triangular filter used on the deconvolved trace
scipy.signal.find_peaks		The function used to find peaks in the deconvolved trace
Segmentation (clustering) parameters		

thresh	1.8	This factor $\times \widehat{SD}$ is the height below which the denoised trace must go to split it. Lower thresh leads to more events per cluster.
pre_c_ms	10 ms	The previous cluster is combined if it is within this distance when it falls below the threshold
post_c_ms	20 ms	The next cluster is combined if it is within this distance when it falls below the threshold
pre_j_ms	10 ms	The previous cluster is combined if it is within this distance of the first event
post_j_ms	10 ms	The next cluster is combined if it is within this distance of the last event
Fitting parameters		
jitter	10 ms	How far the event onset time o can be fit from the initial estimate \hat{o}
height_factor_high	3	how many bigger times the event height h can be fit from the initial estimate \hat{h}
height_factor_low	15	how many smaller times the event height h can be fit from the initial estimate \hat{h}
tau1_min	0.5 ms	Lower bound of τ_{decay}
tau1_max	50 ms	Upper bound of τ_{decay}
tau2_min	0.1 ms	Lower bound of τ_{rise}
tau2_max	10 ms	Upper bound of τ_{rise}
noise_factor	1	The root mean square error between the signal and its reconstruction [$RMS(S - \hat{s})$] is divided by $\text{noise_factor} \times \widehat{SD}$ to normalize it.
regularization	0.2	The root mean square error between the onset time and its estimate [$RMS(o - \hat{o})$] is multiplied by this number to get the regularization. Using these values of noise_factor and regularization yields $\frac{RMS(S - \hat{s})}{\widehat{SD}} + \frac{RMS(o - \hat{o})}{5}$ which is being minimized.
maxiter_DA	$5000 \times \text{num_events_in_cluster}$	num_events_in_cluster is the number of events in the cluster

maxfev_DA	$5000 \times \sqrt{\text{num_events_in_cluster}}$	
maxiter_Powell	$300 \times \text{num_events_in_cluster}$	
maxfev_Powell	$3000 \times \text{num_events_in_cluster}$	

Table 5. Priors used in the Bayesian connectivity models.

Prior	Value	Comments
evoked_window	90 ms	Disregarding the last 10 ms before the next stimulation
rate_mu	4.83 Hz	Calculated empirically from the distribution of rates during spontaneous intervals over all cells
rate_sigma	3.79 Hz	
Evoked_per_trial_mu	1.0	An informative prior; these values define a connected cell in the model assuming connection (model 2)
Evoked_per_trial_sigma	0.35	
bump_center_mu	12.7 ms	Calculated empirically from the data used in Figure 2B
bump_width_mu	6.33 ms	
bump_center_sigma	6.33 ms	
bump_width_sigma	1.5 ms	A small value to for computational stability

References

1. Thomson, A. M. & Lamy, C. Functional maps of neocortical local circuitry. *Front. Neurosci.* **1**, 19–42 (2007).
2. Harris, K. D. & Mrsic-Flogel, T. D. Cortical connectivity and sensory coding. *Nature* **503**, 51–58 (2013).
3. Harris, K. D. & Shepherd, G. M. G. The neocortical circuit: themes and variations. *Nat. Neurosci.* **18**, 170–181 (2015).
4. Song, S., Sjöström, P. J., Reigl, M., Nelson, S. & Chklovskii, D. B. Highly Nonrandom Features of Synaptic Connectivity in Local Cortical Circuits. *PLoS Biol.* **3**, e68 (2005).
5. Yoshimura, Y. & Callaway, E. M. Fine-scale specificity of cortical networks depends on inhibitory cell type and connectivity. *Nat. Neurosci.* **8**, 1552–1559 (2005).
6. Jiang, X. *et al.* Principles of connectivity among morphologically defined cell types in adult neocortex. *Science (80-.)*. **350**, aac9462–aac9462 (2015).

7. Yoshimura, Y., Dantzker, J. L. M. & Callaway, E. M. Excitatory cortical neurons form fine-scale functional networks. *Nature* **433**, 868–873 (2005).
8. Kampa, B. M., Letzkus, J. J. & Stuart, G. J. Cortical feed-forward networks for binding different streams of sensory information. *Nat. Neurosci.* **9**, 1472–1473 (2006).
9. Lefort, S., Tamm, C., Floyd Sarria, J.-C. & Petersen, C. C. H. The Excitatory Neuronal Network of the C2 Barrel Column in Mouse Primary Somatosensory Cortex. *Neuron* **61**, 301–316 (2009).
10. Kozloski, J., Hamzei-Sichani, F. & Yuste, R. Stereotyped Position of Local Synaptic Targets in Neocortex. *Science (80-.)*. **293**, 868–872 (2001).
11. Brown, S. P. & Hestrin, S. Intracortical circuits of pyramidal neurons reflect their long-range axonal targets. *Nature* **457**, 1133–1136 (2009).
12. Le Be, J.-V., Silberberg, G., Wang, Y. & Markram, H. Morphological, Electrophysiological, and Synaptic Properties of Corticocallosal Pyramidal Cells in the Neonatal Rat Neocortex. *Cereb. Cortex* **17**, 2204–2213 (2007).
13. Morishima, M., Morita, K., Kubota, Y. & Kawaguchi, Y. Highly Differentiated Projection-Specific Cortical Subnetworks. *J. Neurosci.* **31**, 10380–10391 (2011).
14. Otsuka, T. & Kawaguchi, Y. Cell Diversity and Connection Specificity between Callosal Projection Neurons in the Frontal Cortex. *J. Neurosci.* **31**, 3862–3870 (2011).
15. Morishima, M. & Kawaguchi, Y. Recurrent connection patterns of corticostriatal pyramidal cells in frontal cortex. *J. Neurosci.* **26**, 4394–405 (2006).
16. Kim, M.-H., Znamenskiy, P., Iacaruso, M. F. & Mrsic-Flogel, T. D. Segregated Subnetworks of Intracortical Projection Neurons in Primary Visual Cortex. *Neuron* **100**, 1313-1321.e6 (2018).
17. Ueta, Y. *et al.* Ipsi- and contralateral corticocortical projection-dependent subcircuits in layer 2 of the rat frontal cortex. *J. Neurophysiol.* **122**, 1461–1472 (2019).
18. Lee, W.-C. A. *et al.* Anatomy and function of an excitatory network in the visual cortex. *Nature* **532**, 370–374 (2016).
19. Petreanu, L., Mao, T., Sternson, S. M. & Svoboda, K. The subcellular organization of neocortical excitatory connections. *Nature* **457**, 1142–1145 (2009).
20. Little, J. P. & Carter, A. G. Subcellular Synaptic Connectivity of Layer 2 Pyramidal Neurons in the Medial Prefrontal Cortex. *J. Neurosci.* **32**, 12808–12819 (2012).
21. Ko, H. *et al.* Functional specificity of local synaptic connections in neocortical networks. *Nature* **473**, 87–91 (2011).
22. Cossell, L. *et al.* Functional organization of excitatory synaptic strength in primary visual cortex. *Nature* **518**, 399–403 (2015).
23. Wang, Y. *et al.* Heterogeneity in the pyramidal network of the medial prefrontal cortex. *Nat. Neurosci.* **9**, 534–542 (2006).
24. Elston, G. N. Cortex, Cognition and the Cell: New Insights into the Pyramidal Neuron and Prefrontal Function. *Cereb. Cortex* **13**, 1124–1138 (2003).
25. Gabbott, P. L. A., Warner, T. A., Jays, P. R. L., Salway, P. & Busby, S. J. Prefrontal cortex in the rat: Projections to subcortical autonomic, motor, and limbic centers. *J. Comp. Neurol.* **492**, 145–177 (2005).

26. Hoover, W. B. & Vertes, R. P. Anatomical analysis of afferent projections to the medial prefrontal cortex in the rat. *Brain Struct. Funct.* **212**, 149–179 (2007).
27. Miller, E. K. & Cohen, J. D. An Integrative Theory of Prefrontal Cortex Function. *Annu. Rev. Neurosci.* **24**, 167–202 (2001).
28. Spellman, T. *et al.* Hippocampal–prefrontal input supports spatial encoding in working memory. *Nature* **522**, 309–314 (2015).
29. Bicks, L. K., Koike, H., Akbarian, S. & Morishita, H. Prefrontal Cortex and Social Cognition in Mouse and Man. *Front. Psychol.* **6**, 1–15 (2015).
30. Levy, D. R. *et al.* Dynamics of social representation in the mouse prefrontal cortex. *Nat. Neurosci.* **22**, 2013–2022 (2019).
31. Stokes, M. G. *et al.* Dynamic Coding for Cognitive Control in Prefrontal Cortex. *Neuron* **78**, 364–375 (2013).
32. Euston, D. R., Gruber, A. J. & McNaughton, B. L. The Role of Medial Prefrontal Cortex in Memory and Decision Making. *Neuron* **76**, 1057–1070 (2012).
33. Courtin, J. *et al.* Prefrontal parvalbumin interneurons shape neuronal activity to drive fear expression. *Nature* **505**, 92–96 (2014).
34. Dejean, C. *et al.* Prefrontal neuronal assemblies temporally control fear behaviour. *Nature* **535**, 420–424 (2016).
35. Sierra-Mercado, D., Padilla-Coreano, N. & Quirk, G. J. Dissociable Roles of Prelimbic and Infralimbic Cortices, Ventral Hippocampus, and Basolateral Amygdala in the Expression and Extinction of Conditioned Fear. *Neuropsychopharmacology* **36**, 529–538 (2011).
36. Do-Monte, F. H., Manzano-Nieves, G., Quinones-Laracuate, K., Ramos-Medina, L. & Quirk, G. J. Revisiting the Role of Infralimbic Cortex in Fear Extinction with Optogenetics. *J. Neurosci.* **35**, 3607–3615 (2015).
37. Pinto, L. & Dan, Y. Cell-Type-Specific Activity in Prefrontal Cortex during Goal-Directed Behavior. *Neuron* **87**, 437–450 (2015).
38. Otis, J. M. *et al.* Prefrontal cortex output circuits guide reward seeking through divergent cue encoding. *Nature* **543**, 103–107 (2017).
39. Bukalo, O. *et al.* Prefrontal inputs to the amygdala instruct fear extinction memory formation. *Sci. Adv.* **1**, e1500251 (2015).
40. Herry, C. *et al.* Switching on and off fear by distinct neuronal circuits. *Nature* **454**, 600–606 (2008).
41. Do-Monte, F. H., Quiñones-Laracuate, K. & Quirk, G. J. A temporal shift in the circuits mediating retrieval of fear memory. *Nature* **519**, 460–463 (2015).
42. Orsini, C. A., Kim, J. H., Knapska, E. & Maren, S. Hippocampal and Prefrontal Projections to the Basal Amygdala Mediate Contextual Regulation of Fear after Extinction. *J. Neurosci.* **31**, 17269–17277 (2011).
43. Bloodgood, D. W., Sugam, J. A., Holmes, A. & Kash, T. L. Fear extinction requires infralimbic cortex projections to the basolateral amygdala. *Transl. Psychiatry* **8**, 60 (2018).
44. Forli, A., Pisoni, M., Printz, Y., Yizhar, O. & Fellin, T. Optogenetic strategies for high-efficiency all-optical interrogation using blue-light-sensitive opsins. *Elife* **10**, 1–25 (2021).
45. Chen, T.-W. *et al.* Ultrasensitive fluorescent proteins for imaging neuronal activity. *Nature* **499**, 295–300 (2013).

46. Tervo, D. G. R. *et al.* A Designer AAV Variant Permits Efficient Retrograde Access to Projection Neurons. *Neuron* **92**, 372–382 (2016).
47. Madisen, L. *et al.* A robust and high-throughput Cre reporting and characterization system for the whole mouse brain. *Nat. Neurosci.* **13**, 133–140 (2010).
48. Yan, C. *et al.* Automated and Accurate Detection of Soma Location and Surface Morphology in Large-Scale 3D Neuron Images. *PLoS One* **8**, e62579 (2013).
49. Bindels, D. S. *et al.* mScarlet: a bright monomeric red fluorescent protein for cellular imaging. *Nat. Methods* **14**, 53–56 (2017).
50. Shaner, N. C. *et al.* Improved monomeric red, orange and yellow fluorescent proteins derived from *Discosoma* sp. red fluorescent protein. *Nat. Biotechnol.* **22**, 1567–1572 (2004).
51. Friedrich, J., Zhou, P. & Paninski, L. Fast online deconvolution of calcium imaging data. *PLOS Comput. Biol.* **13**, e1005423 (2017).
52. Jonas, P., Major, G. & Sakmann, B. Quantal components of unitary EPSCs at the mossy fibre synapse on CA3 pyramidal cells of rat hippocampus. *J. Physiol.* **472**, 615–663 (1993).
53. Little, J. P. & Carter, A. G. Synaptic Mechanisms Underlying Strong Reciprocal Connectivity between the Medial Prefrontal Cortex and Basolateral Amygdala. *J. Neurosci.* **33**, 15333–15342 (2013).
54. Carvalho, C. M., Polson, N. G. & Scott, J. G. Handling sparsity via the horseshoe. *Proc. Mach. Learn. Res.* **5**, 73–80 (2009).
55. Ghosh, S., Yao, J. & Doshi-Velez, F. Model Selection in Bayesian Neural Networks via Horseshoe Priors. *J. Mach. Learn. Res.* **20**, 1–46 (2019).
56. Holmgren, C., Harkany, T., Svennenfors, B. & Zilberter, Y. Pyramidal cell communication within local networks in layer 2/3 of rat neocortex. *J. Physiol.* **551**, 139–153 (2003).
57. Baker, C. A., Elyada, Y. M., Parra, A. & Bolton, M. M. Cellular resolution circuit mapping with temporal-focused excitation of soma-targeted channelrhodopsin. *Elife* **5**, 1–15 (2016).
58. Izquierdo-Serra, M., Hirtz, J. J., Shababo, B. & Yuste, R. Two-Photon Optogenetic Mapping of Excitatory Synaptic Connectivity and Strength. *iScience* **8**, 15–28 (2018).
59. Seeman, S. C. *et al.* Sparse recurrent excitatory connectivity in the microcircuit of the adult mouse and human cortex. *Elife* **7**, 1–27 (2018).
60. Cadwell, C. R. *et al.* Electrophysiological, transcriptomic and morphologic profiling of single neurons using Patch-seq. *Nat. Biotechnol.* **34**, 199–203 (2016).
61. Cadwell, C. R. *et al.* Cell type composition and circuit organization of clonally related excitatory neurons in the juvenile mouse neocortex. *Elife* **9**, (2020).
62. Yu, Y.-C., Bultje, R. S., Wang, X. & Shi, S.-H. Specific synapses develop preferentially among sister excitatory neurons in the neocortex. *Nature* **458**, 501–504 (2009).
63. Yu, Y.-C. *et al.* Preferential electrical coupling regulates neocortical lineage-dependent microcircuit assembly. *Nature* **486**, 113–117 (2012).
64. Zhang, X.-J. *et al.* Precise inhibitory microcircuit assembly of developmentally related neocortical interneurons in clusters. *Nat. Commun.* **8**, 16091 (2017).
65. Ren, S.-Q., Li, Z., Lin, S., Bergami, M. & Shi, S.-H. Precise Long-Range

- Microcircuit-to-Microcircuit Communication Connects the Frontal and Sensory Cortices in the Mammalian Brain. *Neuron* **104**, 385-401.e3 (2019).
66. Ko, H. *et al.* The emergence of functional microcircuits in visual cortex. *Nature* **496**, 96–100 (2013).
 67. Ko, H., Mrsic-Flogel, T. D. & Hofer, S. B. Emergence of Feature-Specific Connectivity in Cortical Microcircuits in the Absence of Visual Experience. *J. Neurosci.* **34**, 9812–9816 (2014).
 68. Biane, J. S., Scanziani, M., Tuszynski, M. H. & Conner, J. M. Motor Cortex Maturation Is Associated with Reductions in Recurrent Connectivity among Functional Subpopulations and Increases in Intrinsic Excitability. *J. Neurosci.* **35**, 4719–4728 (2015).
 69. DeNardo, L. A., Berns, D. S., DeLoach, K. & Luo, L. Connectivity of mouse somatosensory and prefrontal cortex examined with trans-synaptic tracing. *Nat. Neurosci.* **18**, 1687–1697 (2015).
 70. Burdakov, D. & Karnani, M. M. Ultra-sparse Connectivity within the Lateral Hypothalamus. *Curr. Biol.* **30**, 4063-4070.e2 (2020).
 71. Levy, R. B. & Reyes, A. D. Spatial Profile of Excitatory and Inhibitory Synaptic Connectivity in Mouse Primary Auditory Cortex. *J. Neurosci.* **32**, 5609–5619 (2012).
 72. Crochet, S., Chauvette, S., Boucetta, S. & Timofeev, I. Modulation of synaptic transmission in neocortex by network activities. *Eur. J. Neurosci.* **21**, 1030–1044 (2005).
 73. Jouhanneau, J.-S., Kremkow, J., Dornn, A. L. & Poulet, J. F. A. In Vivo Monosynaptic Excitatory Transmission between Layer 2 Cortical Pyramidal Neurons. *Cell Rep.* **13**, 2098–2106 (2015).
 74. McGarry, L. M. & Carter, A. G. Inhibitory Gating of Basolateral Amygdala Inputs to the Prefrontal Cortex. *J. Neurosci.* **36**, 9391–9406 (2016).
 75. McGarry, L. M. & Carter, A. G. Prefrontal Cortex Drives Distinct Projection Neurons in the Basolateral Amygdala. *Cell Rep.* **21**, 1426–1433 (2017).
 76. Burgos-Robles, A. *et al.* Amygdala inputs to prefrontal cortex guide behavior amid conflicting cues of reward and punishment. *Nat. Neurosci.* **20**, 824–835 (2017).
 77. Bacon, S. J., Headlam, A. J. N., Gabbott, P. L. A. & Smith, A. D. Amygdala input to medial prefrontal cortex (mPFC) in the rat: A light and electron microscope study. *Brain Res.* **720**, 211–219 (1996).
 78. Grimm, D., Kay, M. A. & Kleinschmidt, J. A. Helper virus-free, optically controllable, and two-plasmid-based production of adeno-associated virus vectors of serotypes 1 to 6. *Mol. Ther.* **7**, 839–850 (2003).
 79. Dayan, P. & Abbott, L. F. *Theoretical Neuroscience: Computational and Mathematical Modeling of Neural Systems.* (The MIT Press, 2001).
 80. Xiang, Y., Sun, D. ., Fan, W. & Gong, X. . Generalized simulated annealing algorithm and its application to the Thomson model. *Phys. Lett. A* **233**, 216–220 (1997).
 81. Virtanen, P. *et al.* SciPy 1.0: fundamental algorithms for scientific computing in Python. *Nat. Methods* **17**, 261–272 (2020).
 82. Hoffman, M. D. & Gelman, A. The No-U-Turn Sampler: Adaptively Setting Path Lengths in Hamiltonian Monte Carlo. *J. Mach. Learn. Res.* **15**, 1593–1623 (2014).

83. Salvatier, J., Wiecki, T. & Fonnesbeck, C. Probabilistic Programming in Python using PyMC. *PeerJ Comput. Sci.* **2**, e55 (2015).
84. Vehtari, A., Simpson, D., Gelman, A., Yao, Y. & Gabry, J. Pareto Smoothed Importance Sampling. *arXiv* **1507.02646**, (2015).
85. Yao, Y., Vehtari, A., Simpson, D. & Gelman, A. Using Stacking to Average Bayesian Predictive Distributions (with Discussion). *Bayesian Anal.* **13**, (2018).
86. Kumar, R., Carroll, C., Hartikainen, A. & Martin, O. ArviZ a unified library for exploratory analysis of Bayesian models in Python. *J. Open Source Softw.* **4**, 1143 (2019).
87. Rousseeuw, P. J. & Driessen, K. Van. A Fast Algorithm for the Minimum Covariance Determinant Estimator. *Technometrics* **41**, 212–223 (1999).
88. Yona, G., Meitav, N., Kahn, I. & Shoham, S. Realistic Numerical and Analytical Modeling of Light Scattering in Brain Tissue for Optogenetic Applications. *eneuro* **3**, ENEURO.0059-15.2015 (2016).
89. Lu, J. *et al.* Selective inhibitory control of pyramidal neuron ensembles and cortical subnetworks by chandelier cells. *Nat. Neurosci.* **20**, 1377–1383 (2017).
90. Meyer, H. S. *et al.* Inhibitory interneurons in a cortical column form hot zones of inhibition in layers 2 and 5A. *Proc. Natl. Acad. Sci.* **108**, 16807–16812 (2011).
91. Jiang, X. *et al.* Response to Comment on ‘Principles of connectivity among morphologically defined cell types in adult neocortex’. *Science (80-.)*. **353**, 1108–1108 (2016).
92. Stepanyants, A., Martinez, L. M., Ferecsko, A. S. & Kisvarday, Z. F. The fractions of short- and long-range connections in the visual cortex. *Proc. Natl. Acad. Sci.* **106**, 3555–3560 (2009).
93. Pala, A. & Petersen, C. C. H. In Vivo Measurement of Cell-Type-Specific Synaptic Connectivity and Synaptic Transmission in Layer 2/3 Mouse Barrel Cortex. *Neuron* **85**, 68–75 (2015).
94. Jouhanneau, J.-S., Kremkow, J. & Poulet, J. F. A. Single synaptic inputs drive high-precision action potentials in parvalbumin expressing GABA-ergic cortical neurons in vivo. *Nat. Commun.* **9**, 1540 (2018).
95. Kirov, S. A., Sorra, K. E. & Harris, K. M. Slices Have More Synapses than Perfusion-Fixed Hippocampus from both Young and Mature Rats. *J. Neurosci.* **19**, 2876–2886 (1999).
96. Van De Werd, H. J. J. M., Rajkowska, G., Evers, P. & Uylings, H. B. M. Cytoarchitectonic and chemoarchitectonic characterization of the prefrontal cortical areas in the mouse. *Brain Struct. Funct.* **214**, 339–353 (2010).